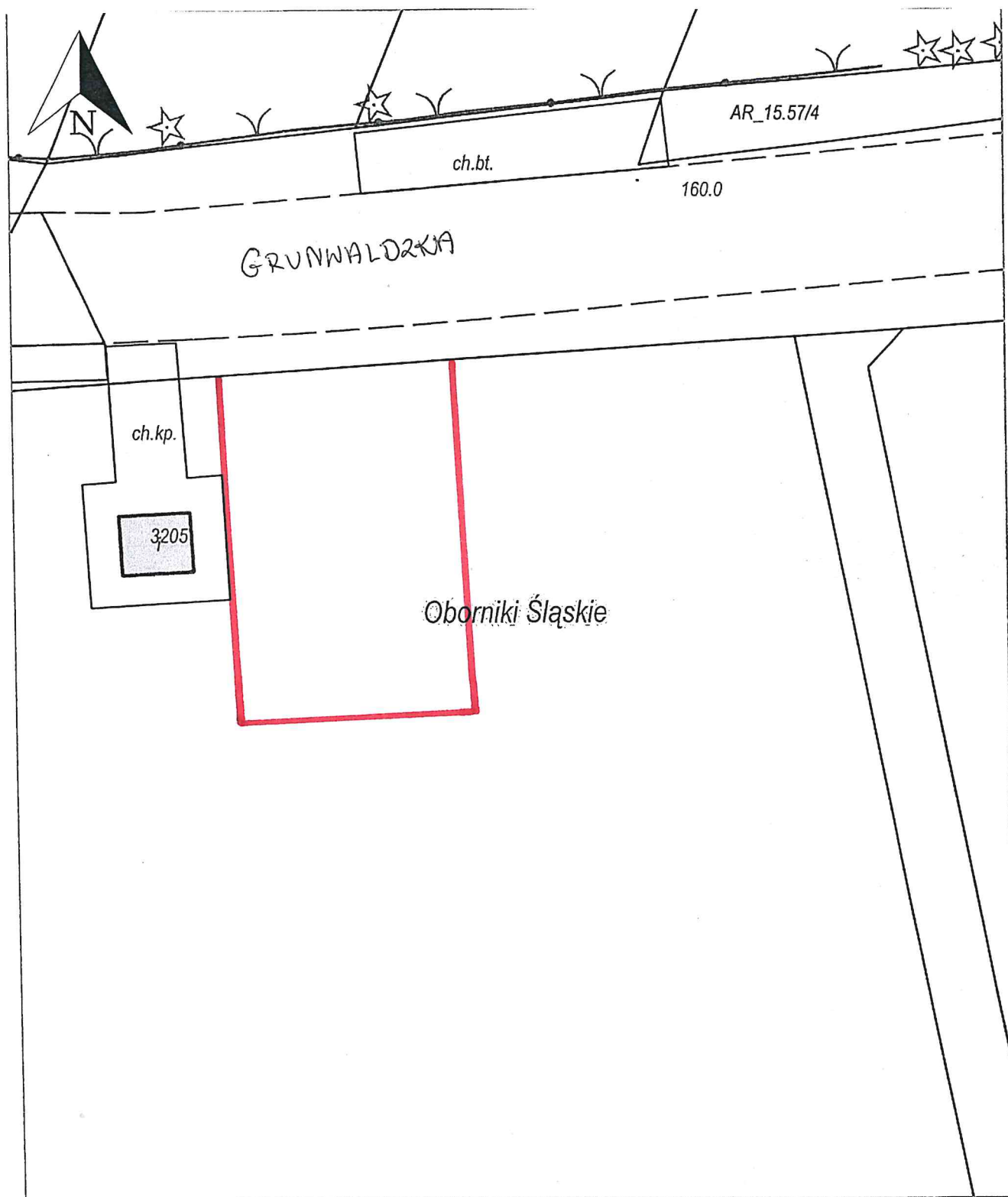
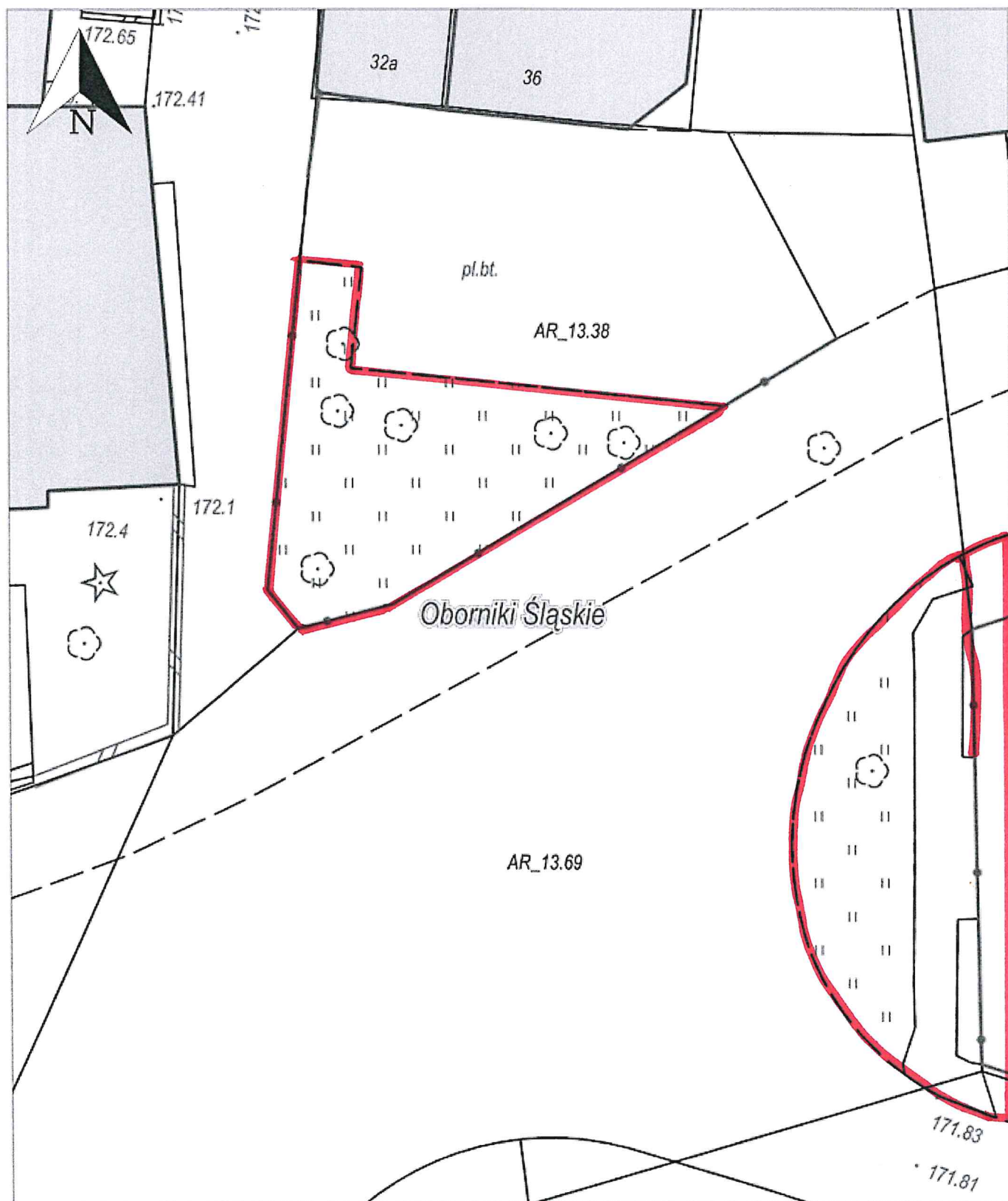


1.1.

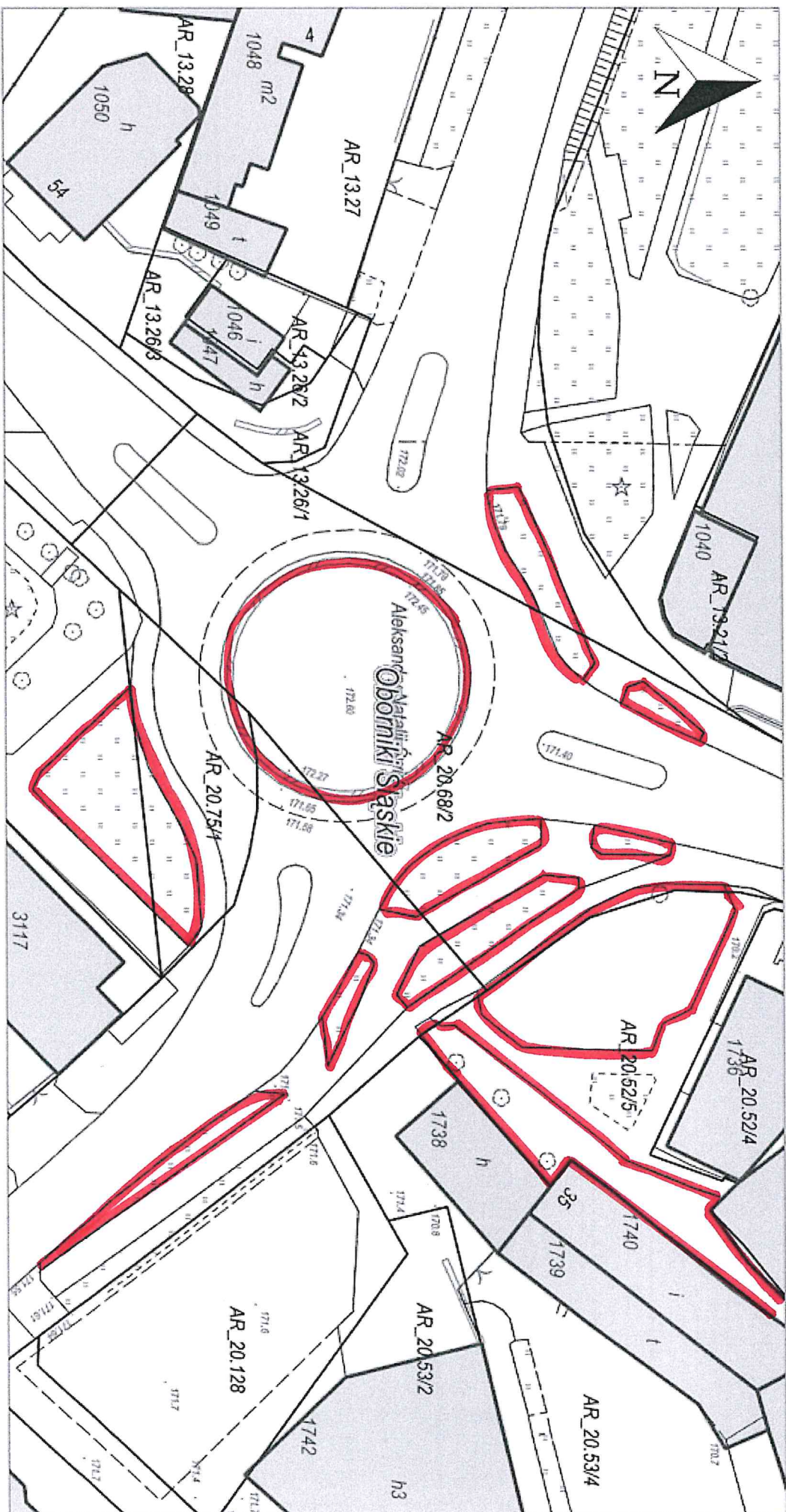




1.2.

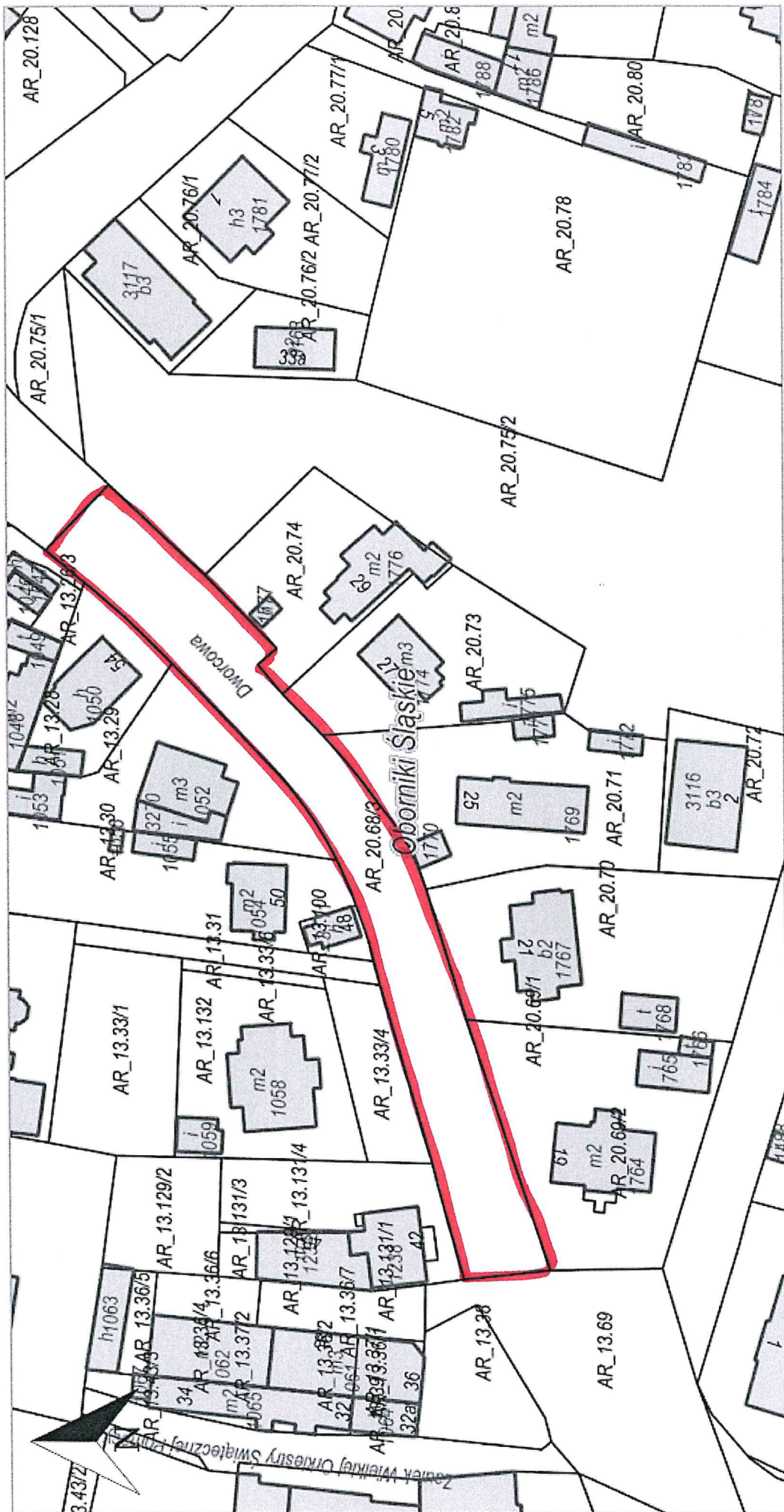








A.4.



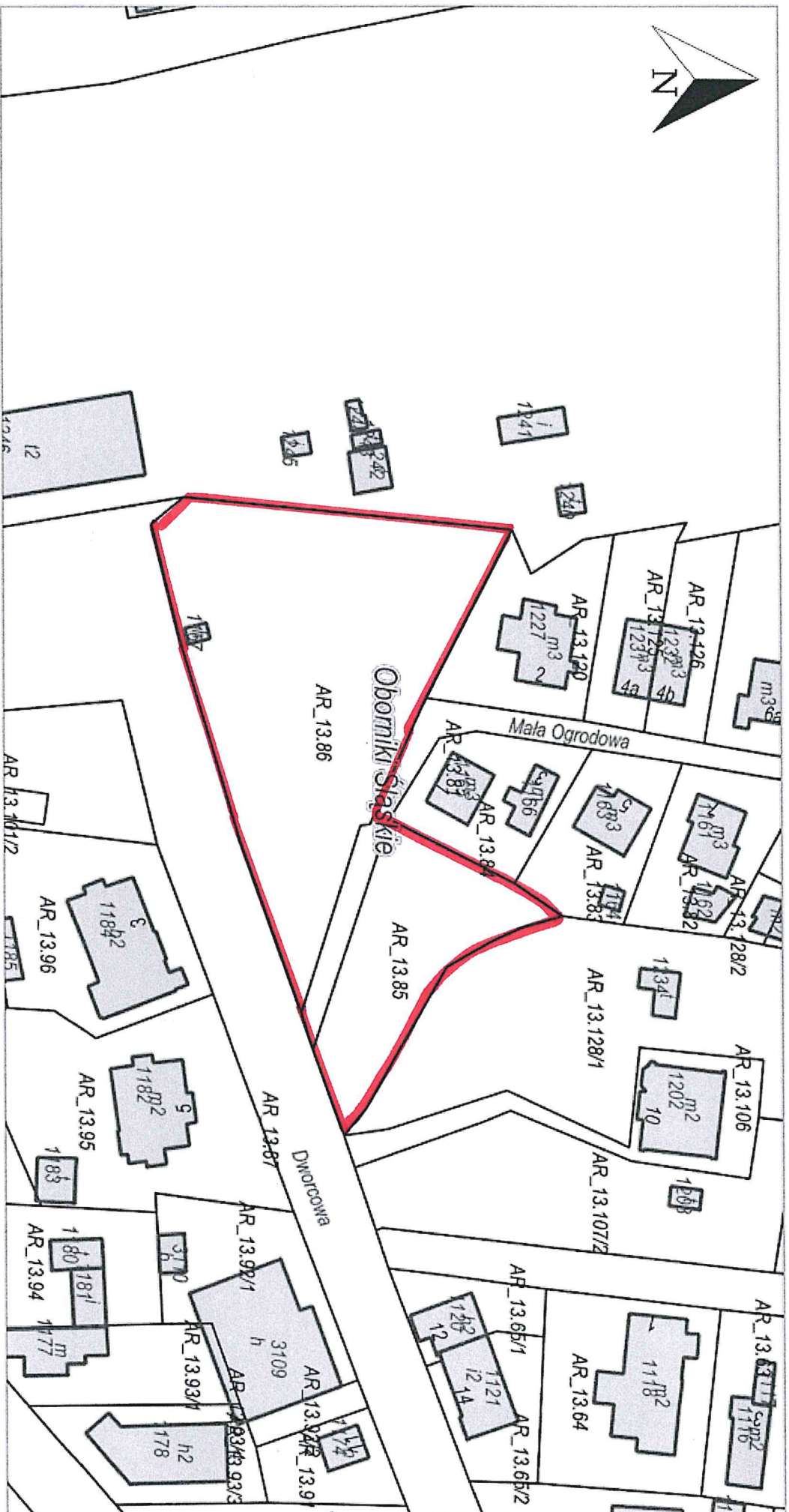


1.4.





1.5.





The map displays the town of Oborniki Śląskie, with a red line highlighting a specific area. The map includes a north arrow and various labels for buildings and land parcels. The labels include:

- 12 1246
- AR\_13.101/2
- AR\_13.101/3
- AR\_13.101/4
- AR\_13.101/5
- AR\_13.101/6
- AR\_13.101/7
- AR\_13.101/8
- AR\_13.96
- AR\_13.97
- AR\_13.98/2
- AR\_13.98/1
- AR\_13.99
- AR\_19.162
- AR\_19.160/2
- AR\_19.13
- AR\_19.15
- AR\_19.16/2
- AR\_19.17
- AR\_19.14
- AR\_19.26/2
- AR\_19.26/1
- AR\_19.14/2
- AR\_19.14/1
- AR\_19.14/3
- AR\_19.14/4
- AR\_19.14/5
- AR\_19.14/6
- AR\_19.14/7
- AR\_19.14/8
- AR\_19.14/9
- AR\_19.14/10
- AR\_19.14/11
- AR\_19.14/12
- AR\_19.14/13
- AR\_19.14/14
- AR\_19.14/15
- AR\_19.14/16
- AR\_19.14/17
- AR\_19.14/18
- AR\_19.14/19
- AR\_19.14/20
- AR\_19.14/21
- AR\_19.14/22
- AR\_19.14/23
- AR\_19.14/24
- AR\_19.14/25
- AR\_19.14/26
- AR\_19.14/27
- AR\_19.14/28
- AR\_19.14/29
- AR\_19.14/30
- AR\_19.14/31
- AR\_19.14/32
- AR\_19.14/33
- AR\_19.14/34
- AR\_19.14/35
- AR\_19.14/36
- AR\_19.14/37
- AR\_19.14/38
- AR\_19.14/39
- AR\_19.14/40
- AR\_19.14/41
- AR\_19.14/42
- AR\_19.14/43
- AR\_19.14/44
- AR\_19.14/45
- AR\_19.14/46
- AR\_19.14/47
- AR\_19.14/48
- AR\_19.14/49
- AR\_19.14/50
- AR\_19.14/51
- AR\_19.14/52
- AR\_19.14/53
- AR\_19.14/54
- AR\_19.14/55
- AR\_19.14/56
- AR\_19.14/57
- AR\_19.14/58
- AR\_19.14/59
- AR\_19.14/60
- AR\_19.14/61
- AR\_19.14/62
- AR\_19.14/63
- AR\_19.14/64
- AR\_19.14/65
- AR\_19.14/66
- AR\_19.14/67
- AR\_19.14/68
- AR\_19.14/69
- AR\_19.14/70
- AR\_19.14/71
- AR\_19.14/72
- AR\_19.14/73
- AR\_19.14/74
- AR\_19.14/75
- AR\_19.14/76
- AR\_19.14/77
- AR\_19.14/78
- AR\_19.14/79
- AR\_19.14/80
- AR\_19.14/81
- AR\_19.14/82
- AR\_19.14/83
- AR\_19.14/84
- AR\_19.14/85
- AR\_19.14/86
- AR\_19.14/87
- AR\_19.14/88
- AR\_19.14/89
- AR\_19.14/90
- AR\_19.14/91
- AR\_19.14/92
- AR\_19.14/93
- AR\_19.14/94
- AR\_19.14/95
- AR\_19.14/96
- AR\_19.14/97
- AR\_19.14/98
- AR\_19.14/99
- AR\_19.14/100



1.7.









This is a detailed topographic map of the Oborniki Śląskie area. A prominent red line runs diagonally across the map, likely indicating a boundary or a specific terrain feature. The map is covered with numerous elevation points, such as 163.5, 164.1, 165.4, 165.6, 166.0, 167.2, 167.9, 168.6, 168.9, 169.4, 170.0, 170.2, 170.4, 170.5, 170.7, 170.8, 170.9, 171.0, 171.1, 171.2, 171.3, 171.4, 171.5, 171.6, 171.7, 171.8, 171.9, 172.0, 172.1, 172.2, 172.3, 172.4, 172.5, 172.6, 172.7, 172.8, 172.9, 173.0, 173.1, 173.2, 173.3, 173.4, 173.5, 173.6, 173.7, 173.8, 173.9, 174.0, 174.1, 174.2, 174.3, 174.4, 174.5, 174.6, 174.7, 174.8, 174.9, 175.0, 175.1, 175.2, 175.3, 175.4, 175.5, 175.6, 175.7, 175.8, 175.9, 176.0, 176.1, 176.2, 176.3, 176.4, 176.5, 176.6, 176.7, 176.8, 176.9, 177.0, 177.1, 177.2, 177.3, 177.4, 177.5, 177.6, 177.7, 177.8, 177.9, 178.0, 178.1, 178.2, 178.3, 178.4, 178.5, 178.6, 178.7, 178.8, 178.9, 179.0, 179.1, 179.2, 179.3, 179.4, 179.5, 179.6, 179.7, 179.8, 179.9, 180.0. The map also shows various contour lines and a network of roads. The label 'Oborniki Śląskie' is clearly visible in the center. In the top right corner, there is a north arrow pointing towards the top right, with a scale of 1:50,000. The map is labeled with 'AR\_15.621' and 'AR\_15.63' in the top right corner.

AR\_15.63

15.61

72

AR 156202

# Oborniki Śląskie

1624

1672

1652

167.2

157.0

4065

14527

164.4

764.7

1045

Source: *Author's calculations*.

1175

77

1

7

1

7

1

*Copyright © 2006 by John Wiley & Sons, Inc.*

!

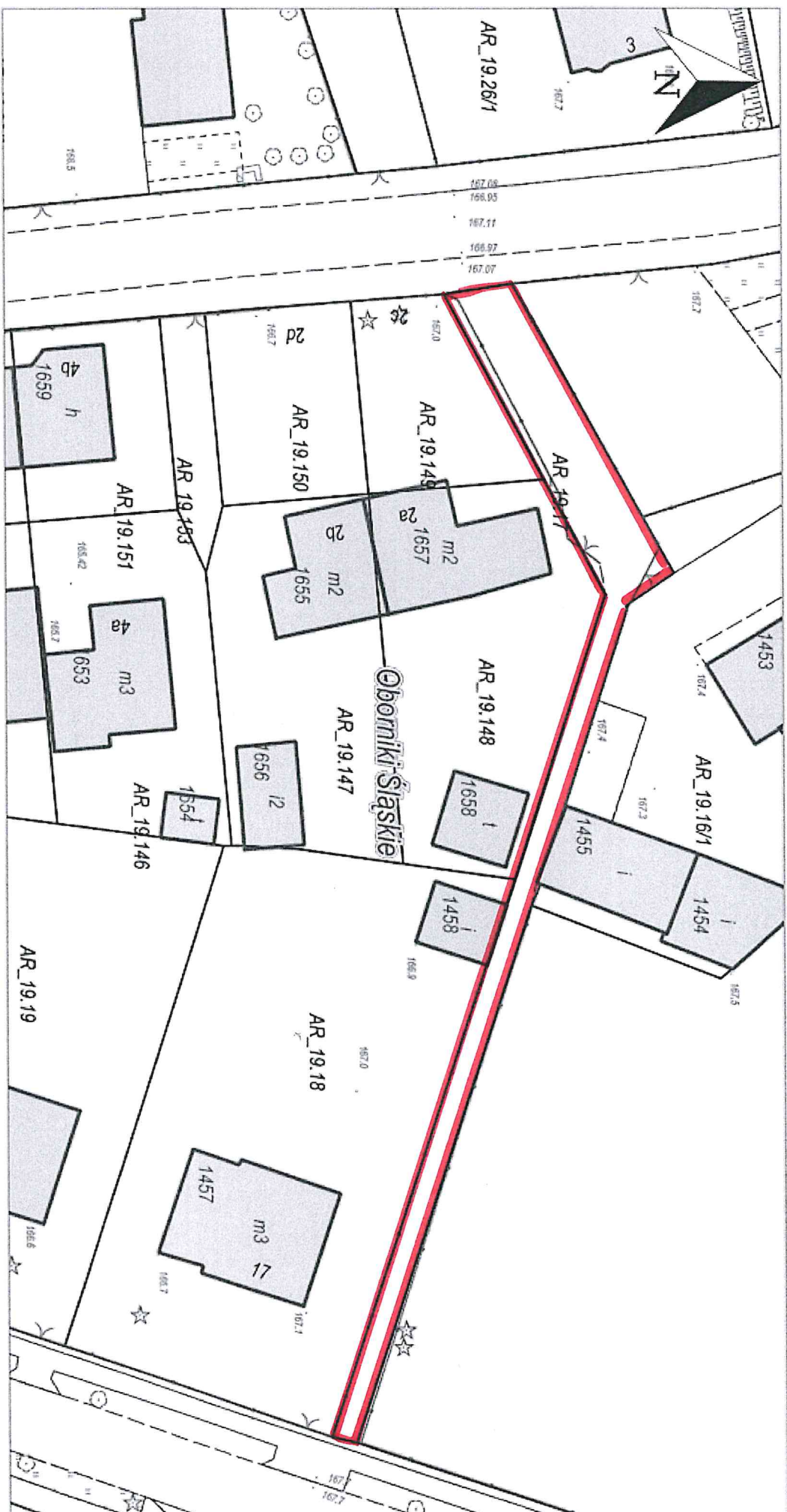
10

1

1

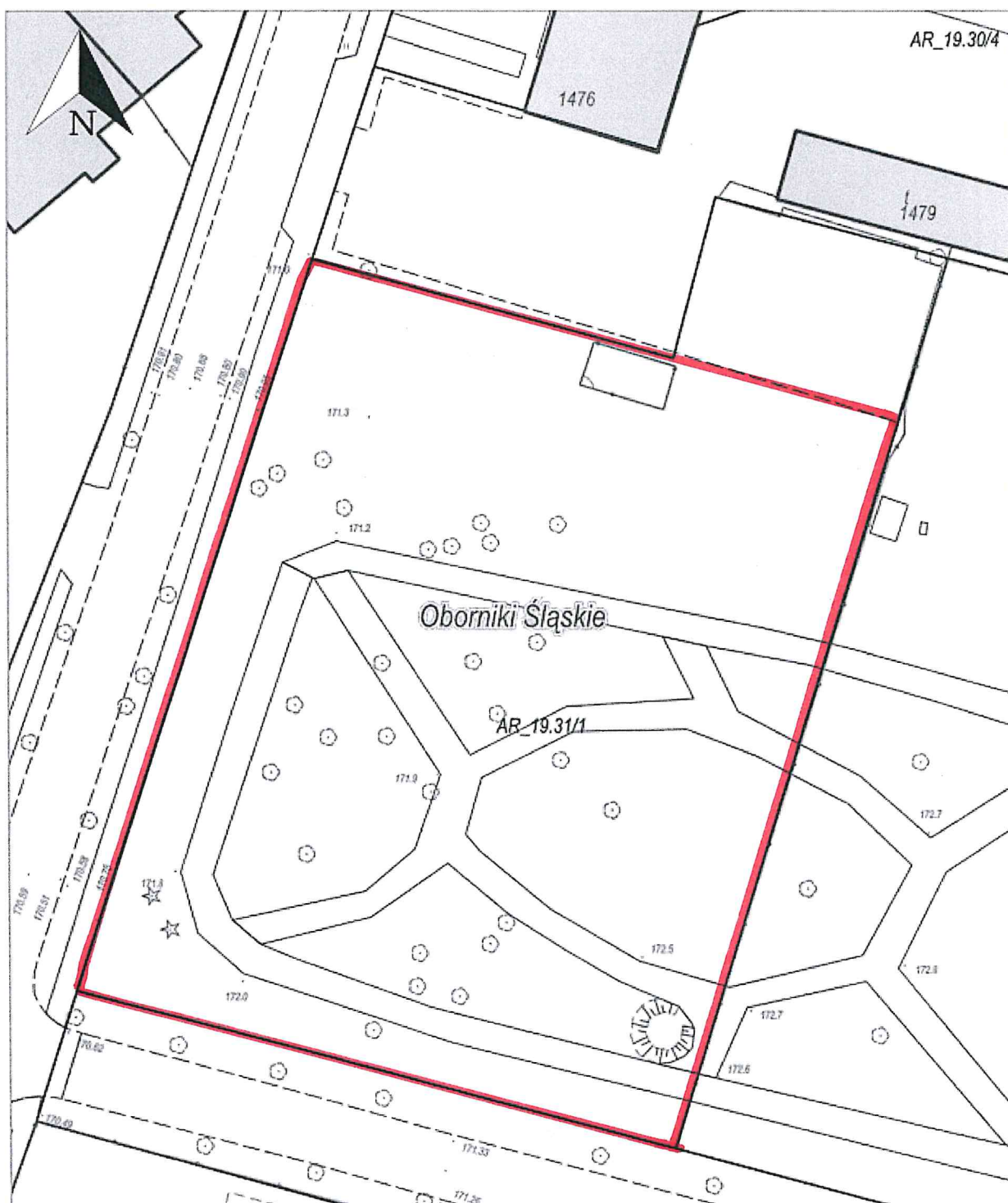


2.1.



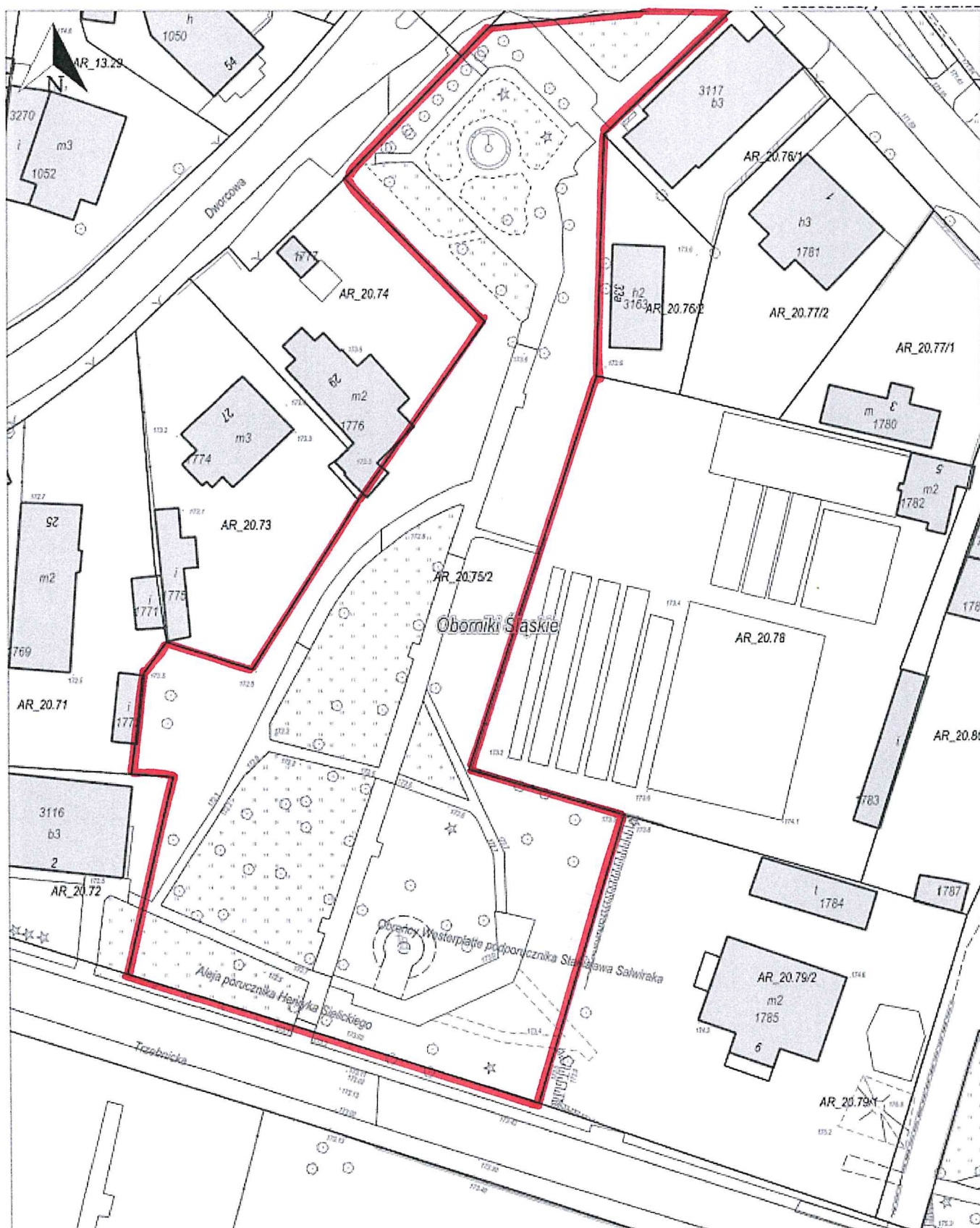


2.2.



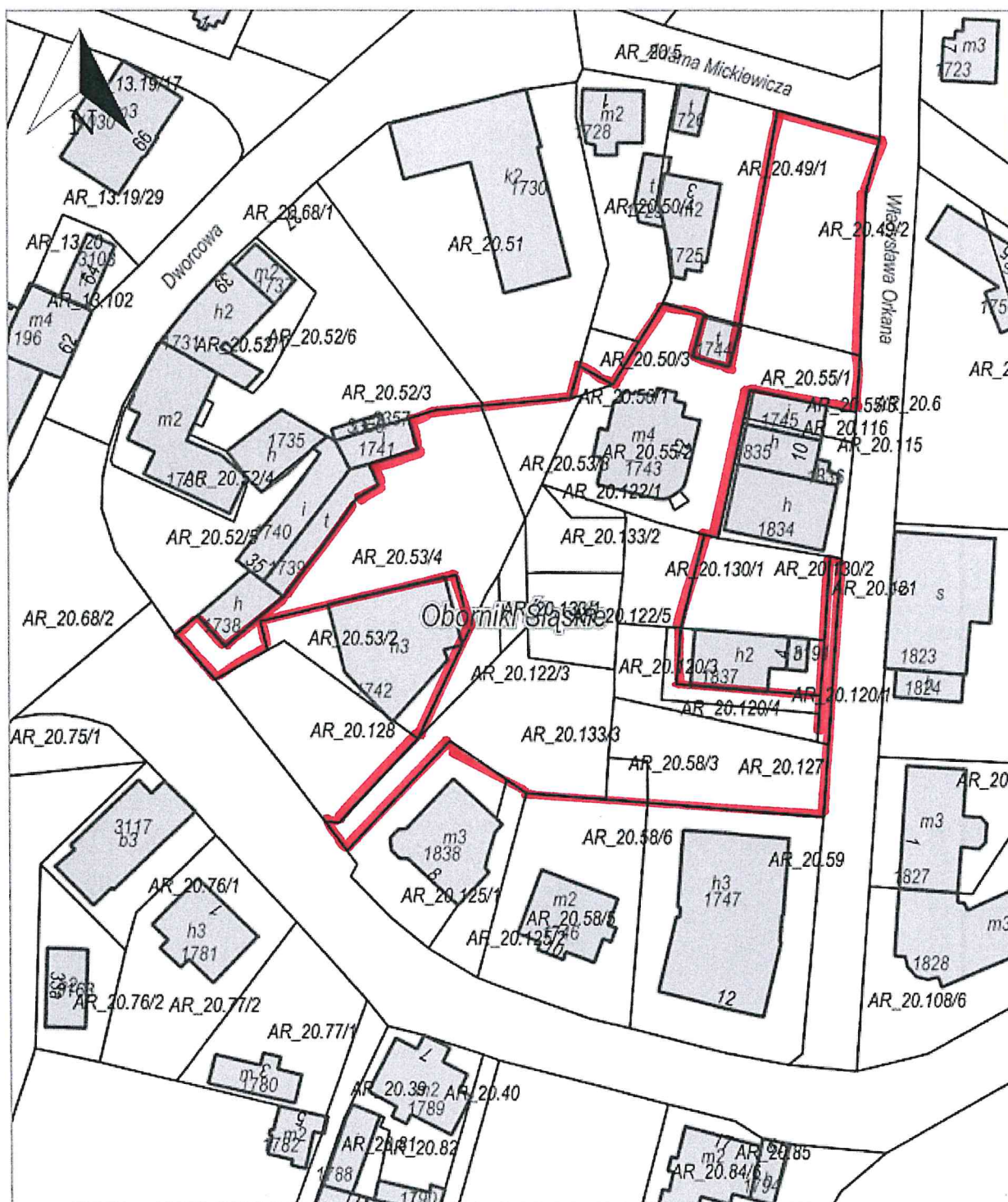


3.1.



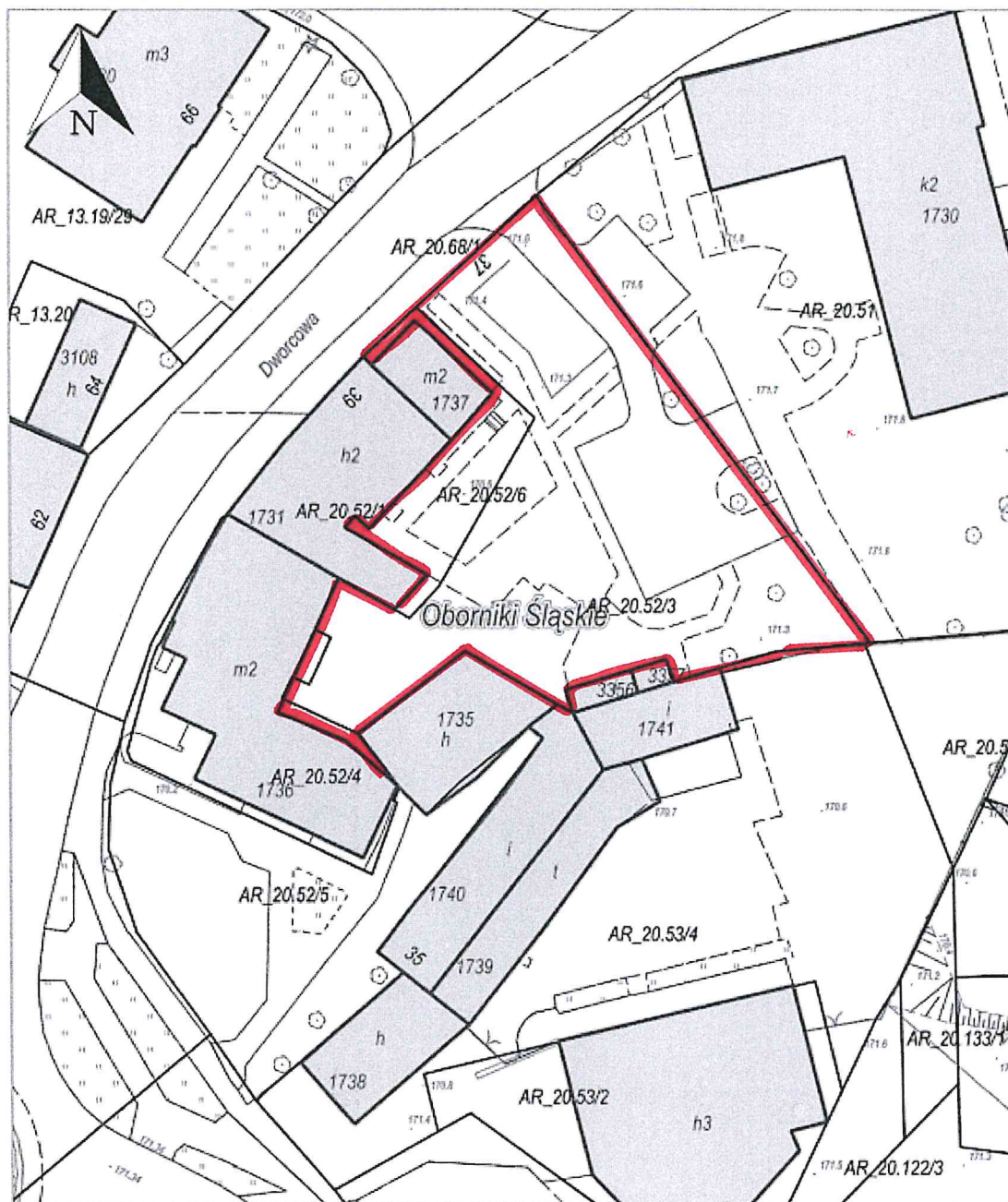


## 3.2.



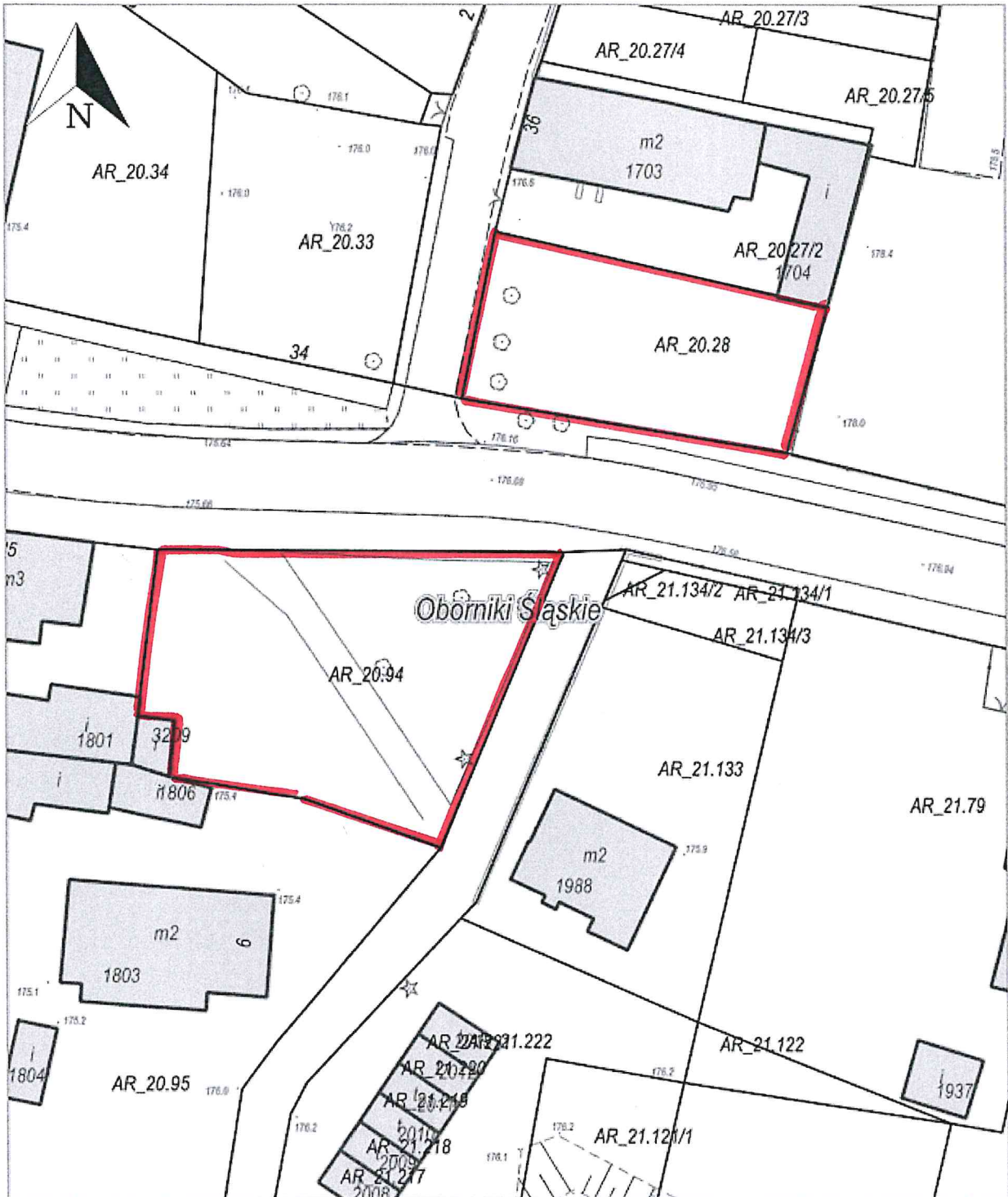


3.3.



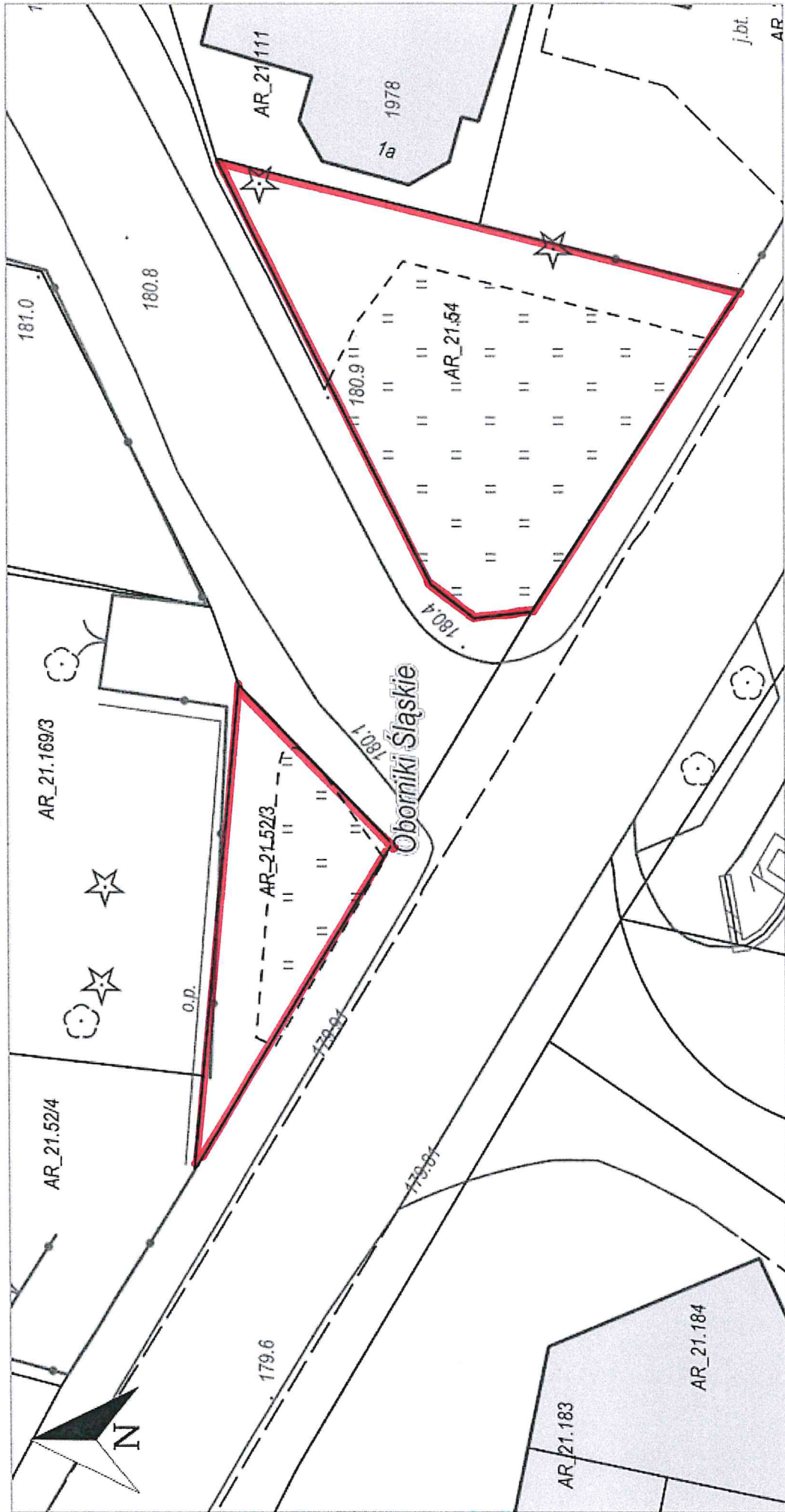


3.4.i 3.5.



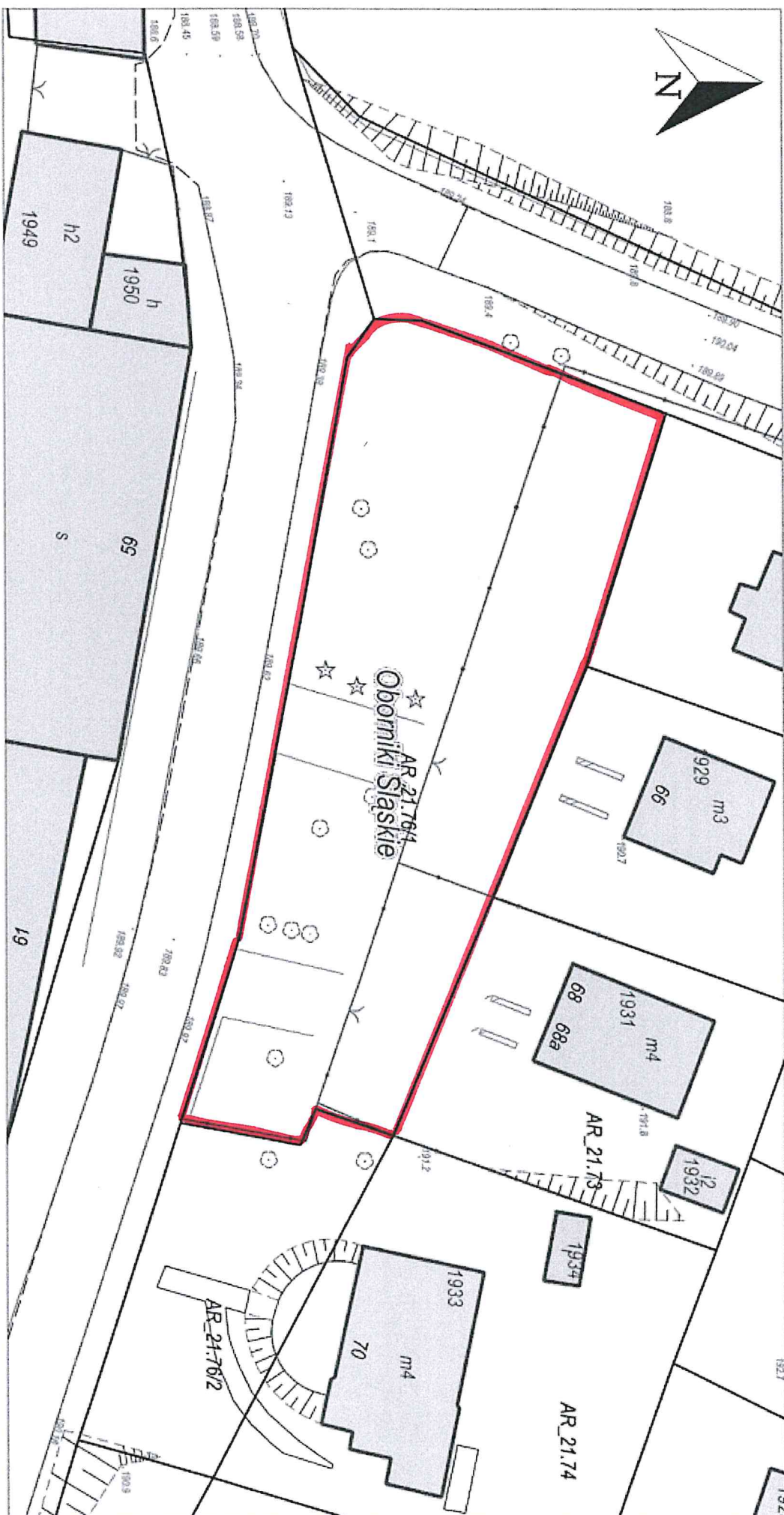


5.6.





B.7.





The map displays the following buildings and their details:

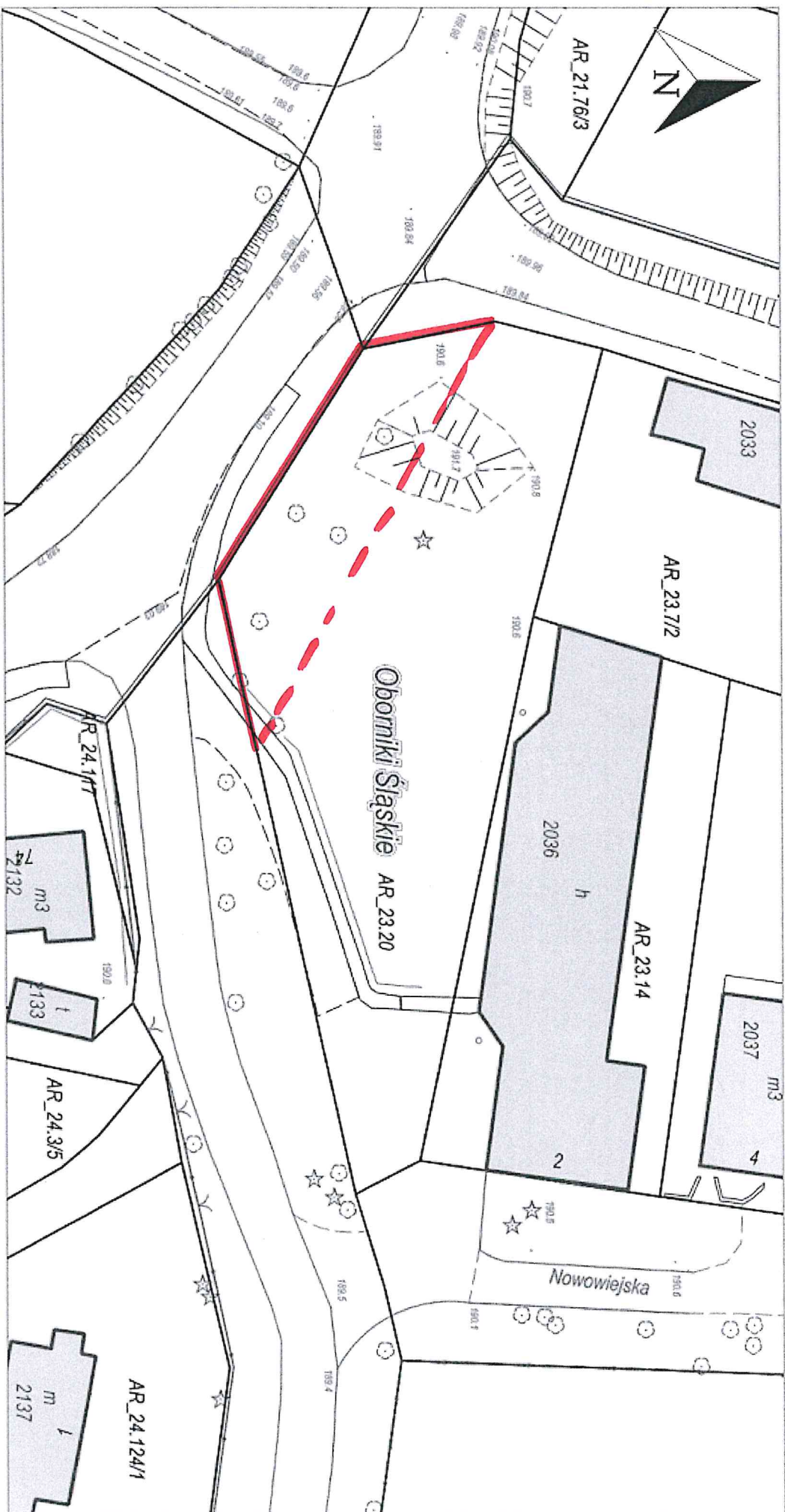
- Top Left:** Building with area  $m^2$  3160, identification number AR\_24.55/1, and a small area of 83.
- Top Center:** Building with area  $m^2$  181, identification number AR\_24.53/1.
- Top Right:** Building with area  $m^2$  2141, identification number AR\_24.134/8, and a small area of 108.5.
- Center:** Building with area  $m^2$  2140, identification number AR\_24.134/11, and a small area of 108.4.
- Bottom Left:** Building with area  $m^4$  2142, identification number AR\_24.134/2, and a small area of 108.5.
- Bottom Center:** Building with area  $m^2$  2154, identification number AR\_24.134/4, and a small area of 11.
- Bottom Right:** Building with area  $m^2$  2142, identification number AR\_24.134/6, and a small area of 108.5.

A red line highlights a plot of land along the top and right edges of the map. A red dashed line indicates a boundary or easement running diagonally across the center of the map.

Oborniki Śląskie



3.8.

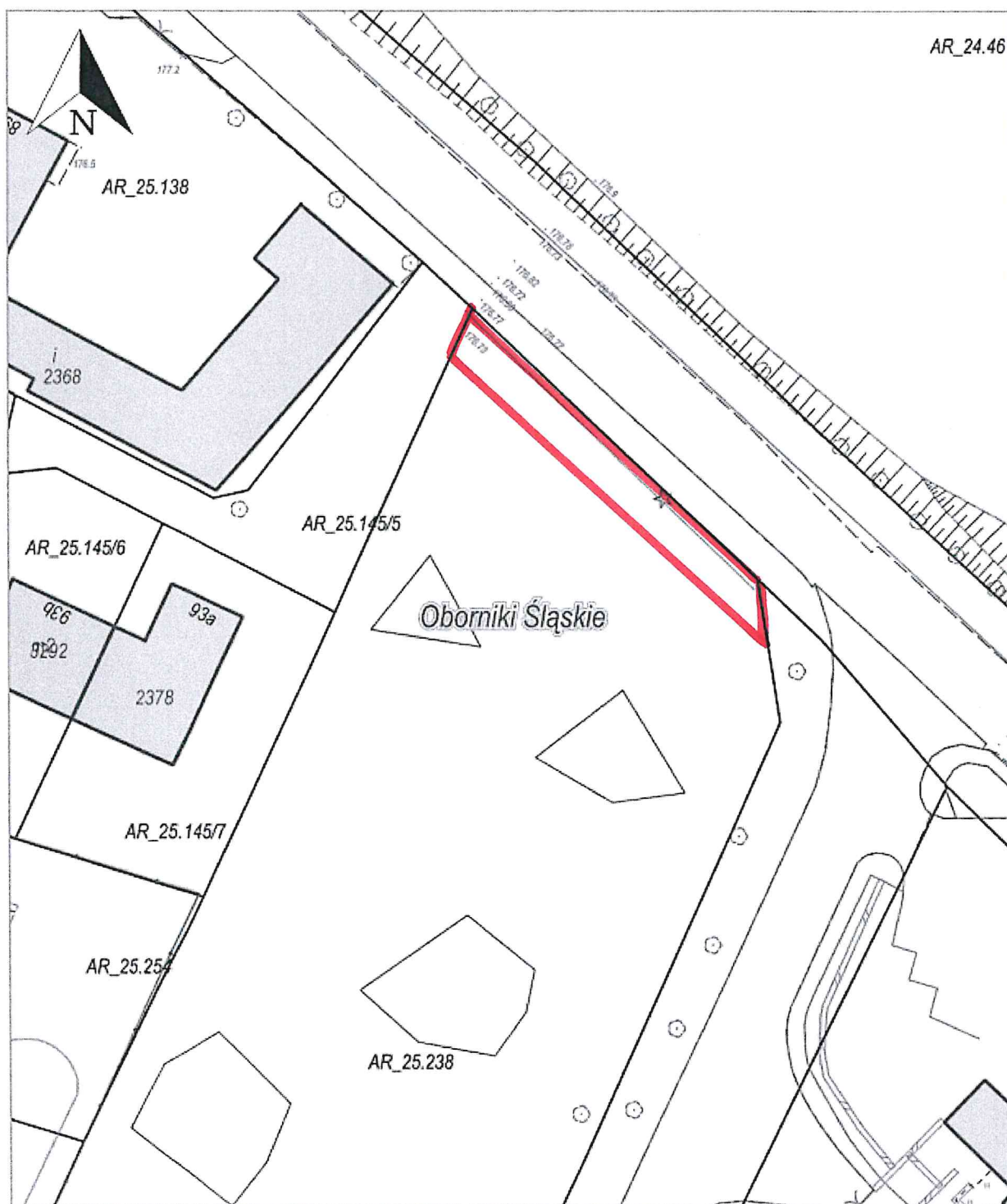








4.1.









The map shows a cadastral layout with the following details:

- Central Parcel:** AR\_26.112/1, outlined in red, located in Oborniki Śląskie.
- Surrounding Parcels:**
  - AR\_26.112/2 (top left)
  - AR\_26.112/3 (middle left)
  - AR\_26.112/4 (bottom left)
  - AR\_26.117/3 (bottom center)
  - AR\_26.117/4 (bottom center)
  - AR\_26.113/1 (bottom right)
  - AR\_26.113/2 (bottom right)
  - AR\_26.125 (bottom left)
- Buildings:** Several building footprints are shown, some labeled with 'm2' and numbers like 2547, 2548, 2546, 2558, 2550, 2507, and 2508.
- Other Features:** A north arrow is in the top left. Elevation points (e.g., 378.1, 377.8, 377.9) are marked along the boundaries. A road or path is visible on the right side.



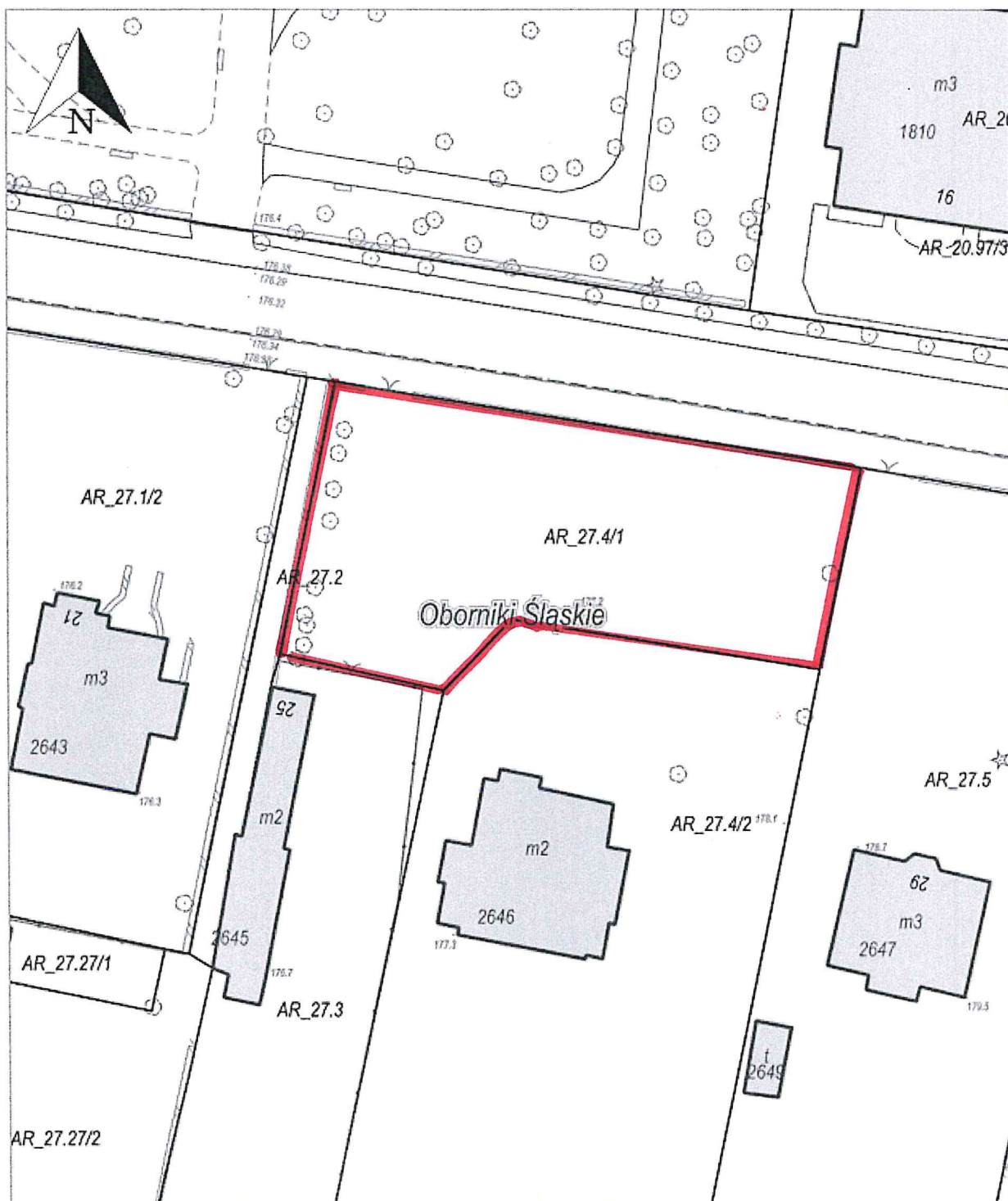






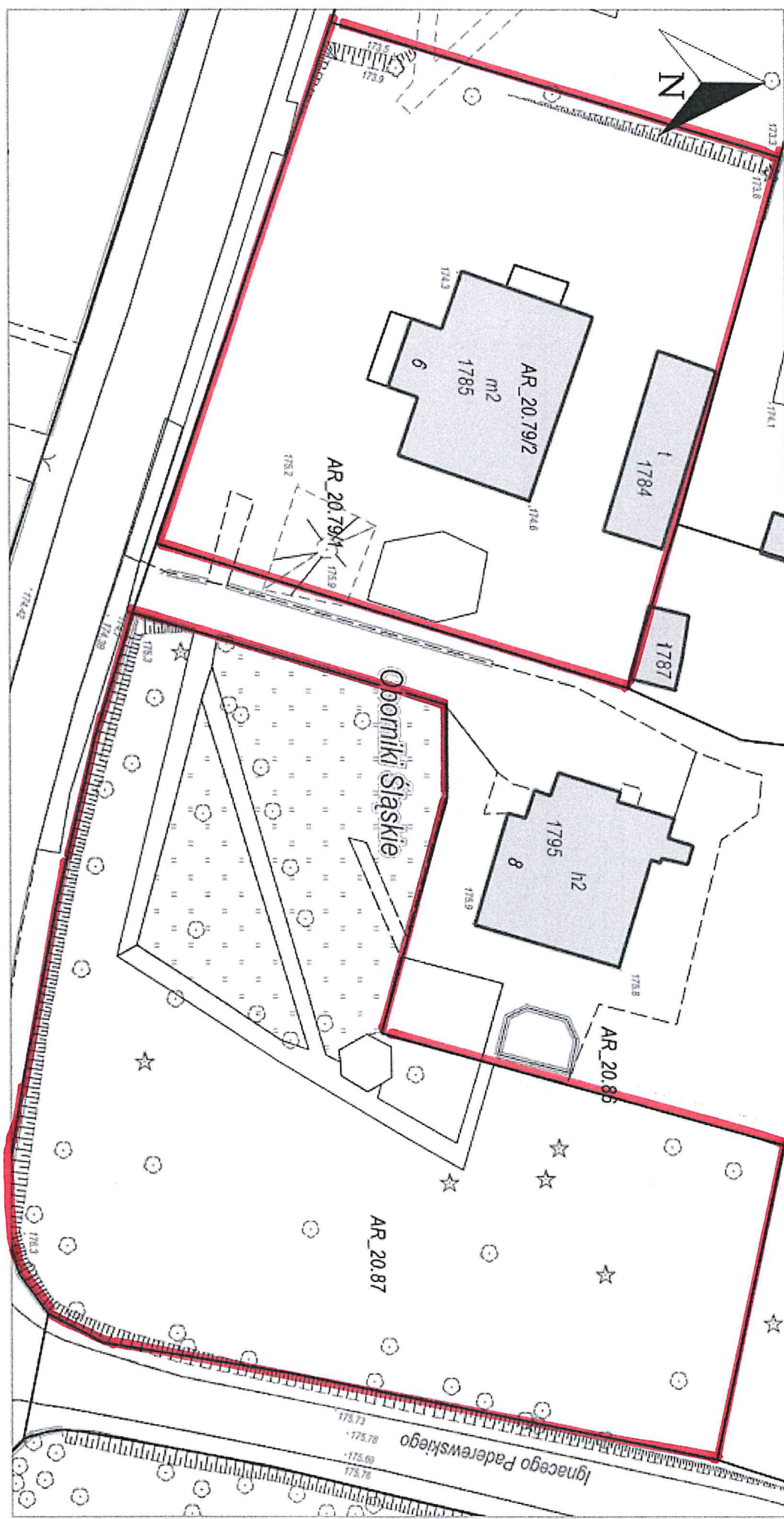


4.7.



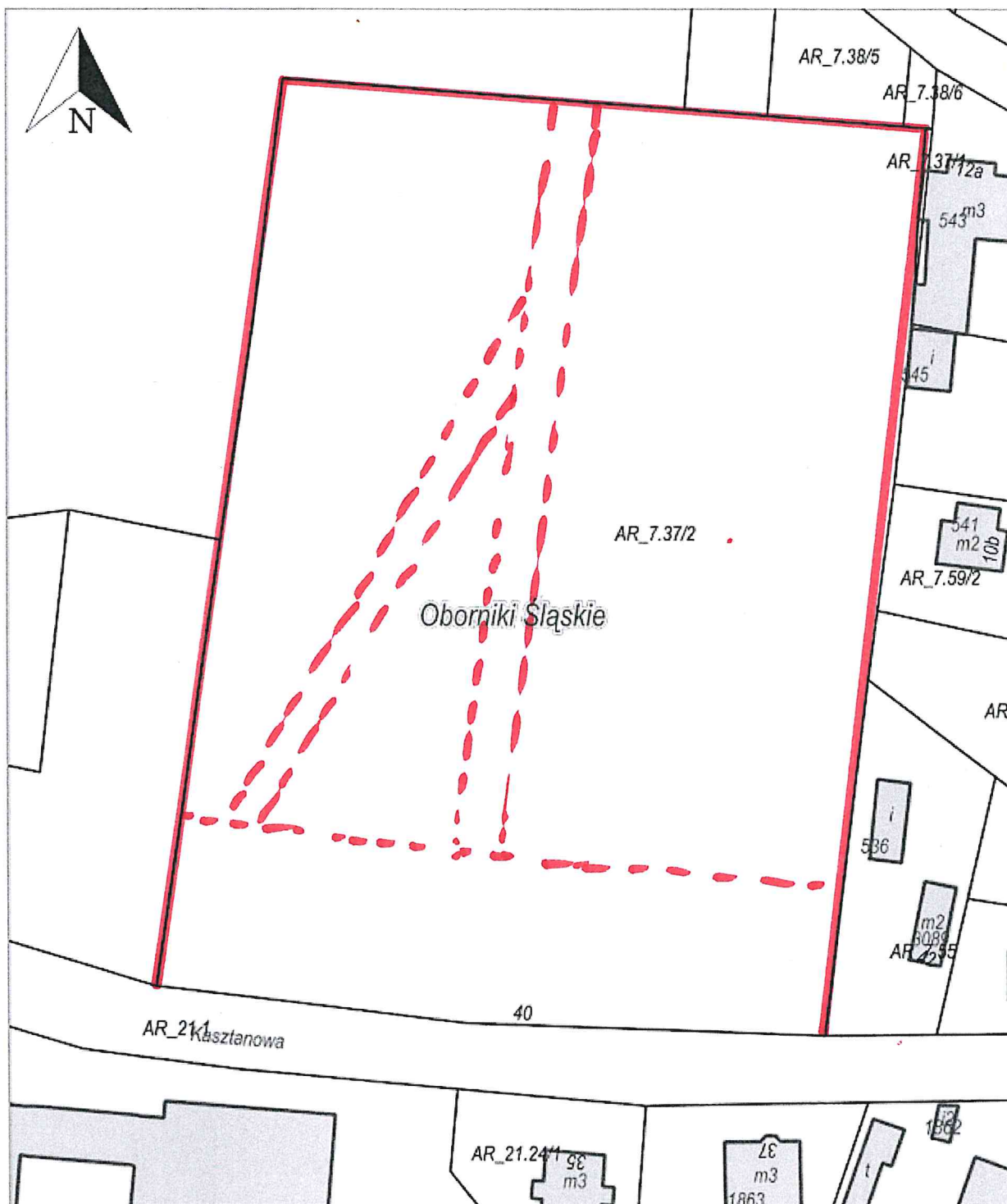


4.8 i 4.9:



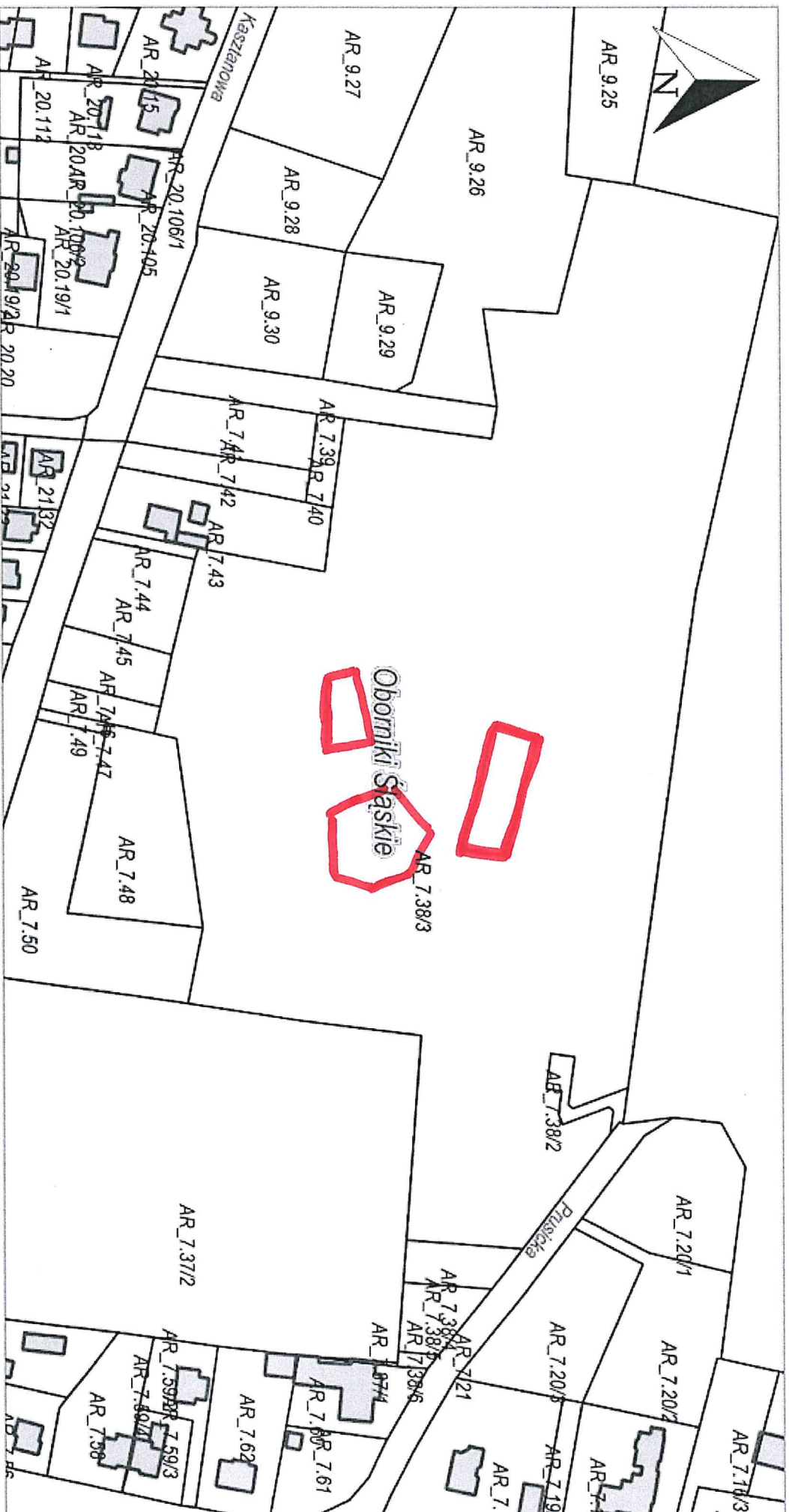


5.1. i 5.2.



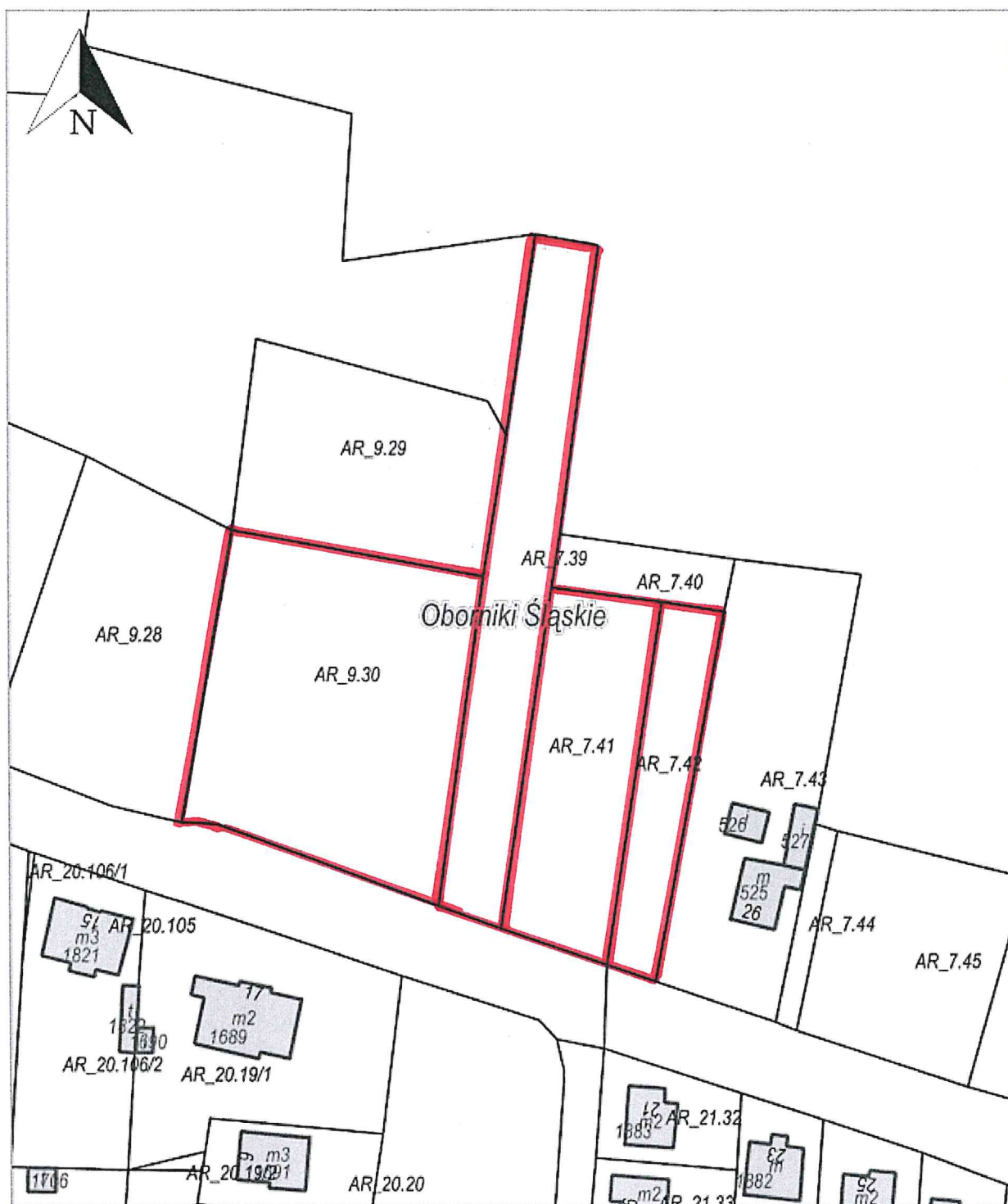


5.5.



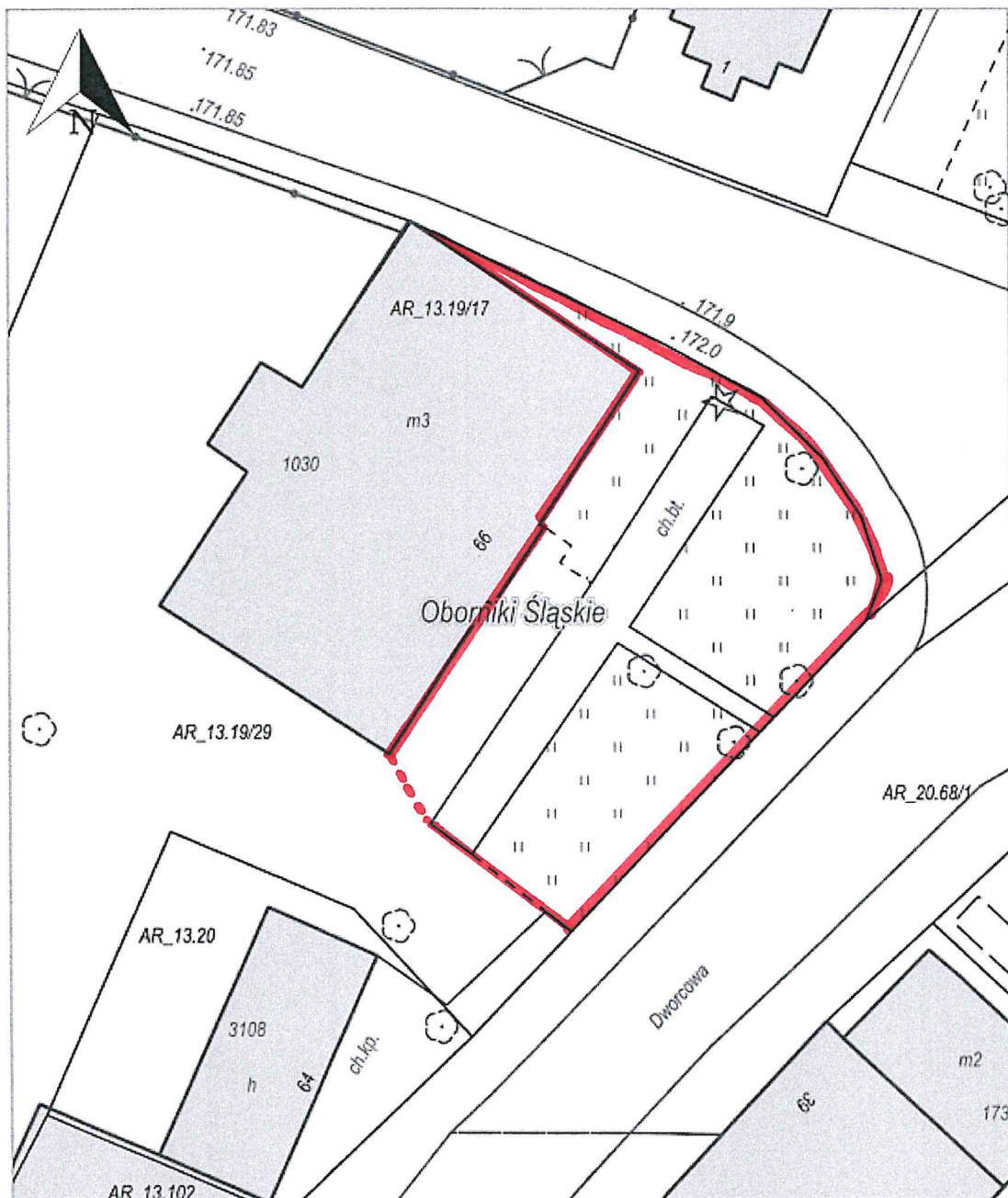


5.4.



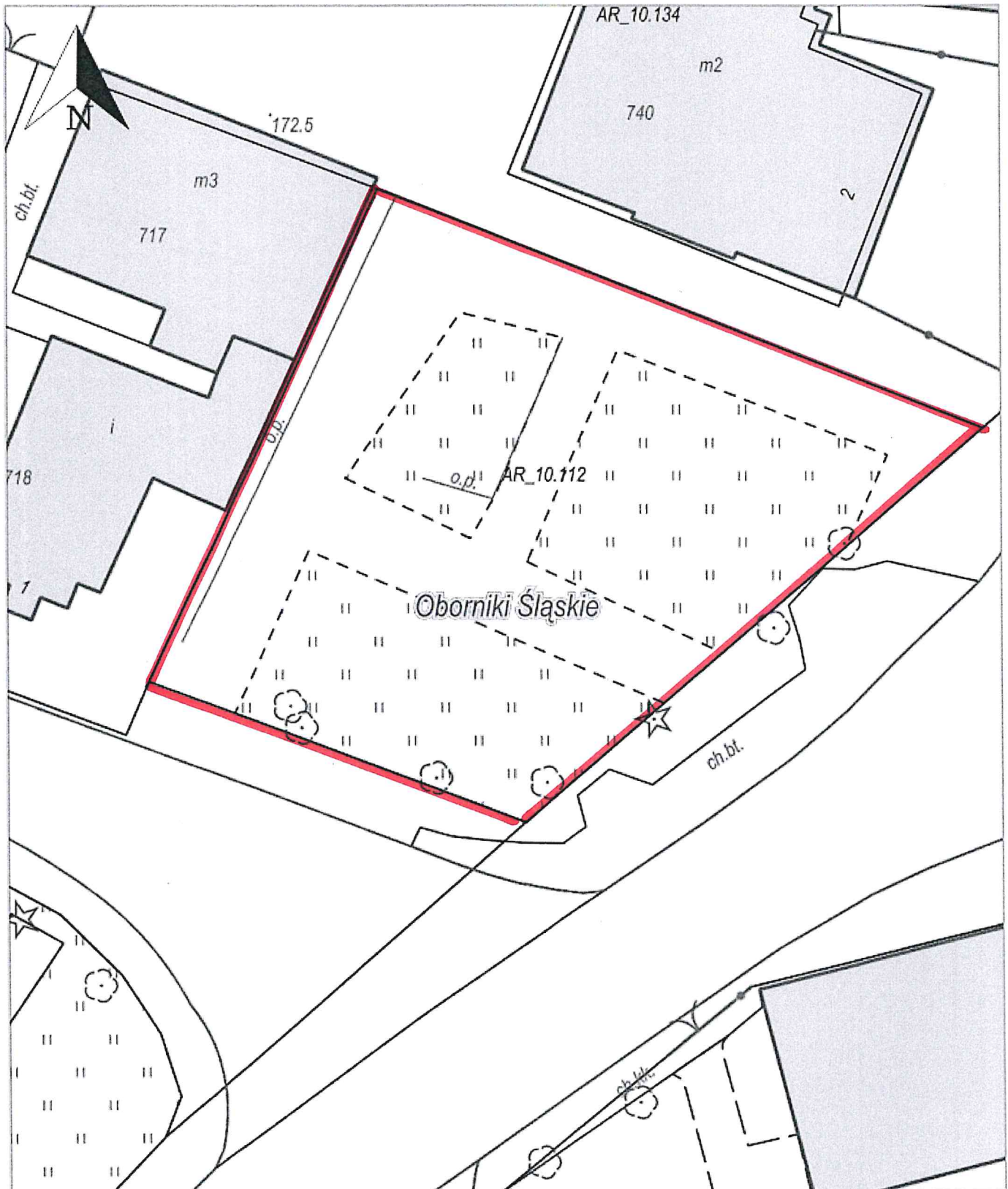


5.5.



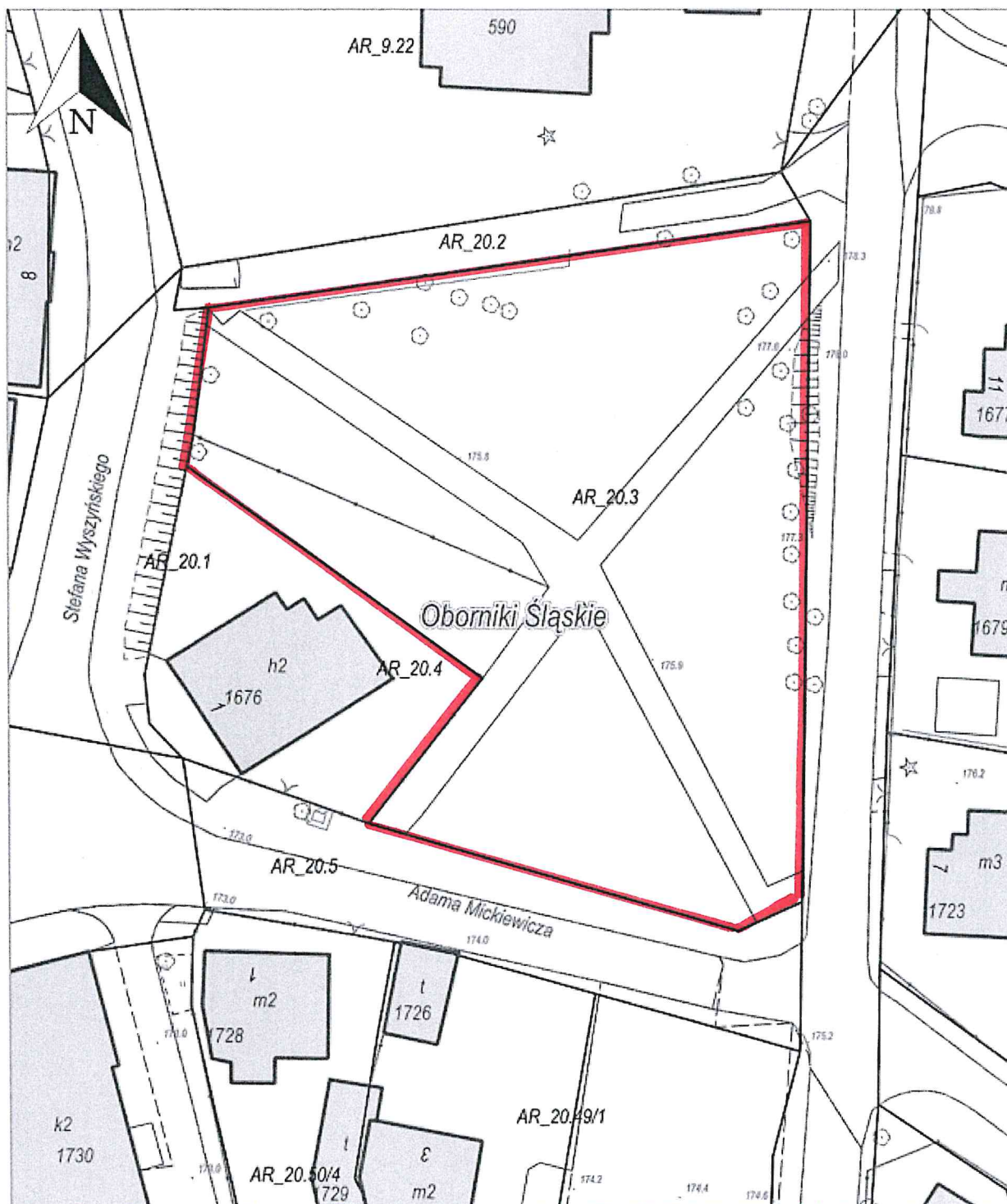


5.6.



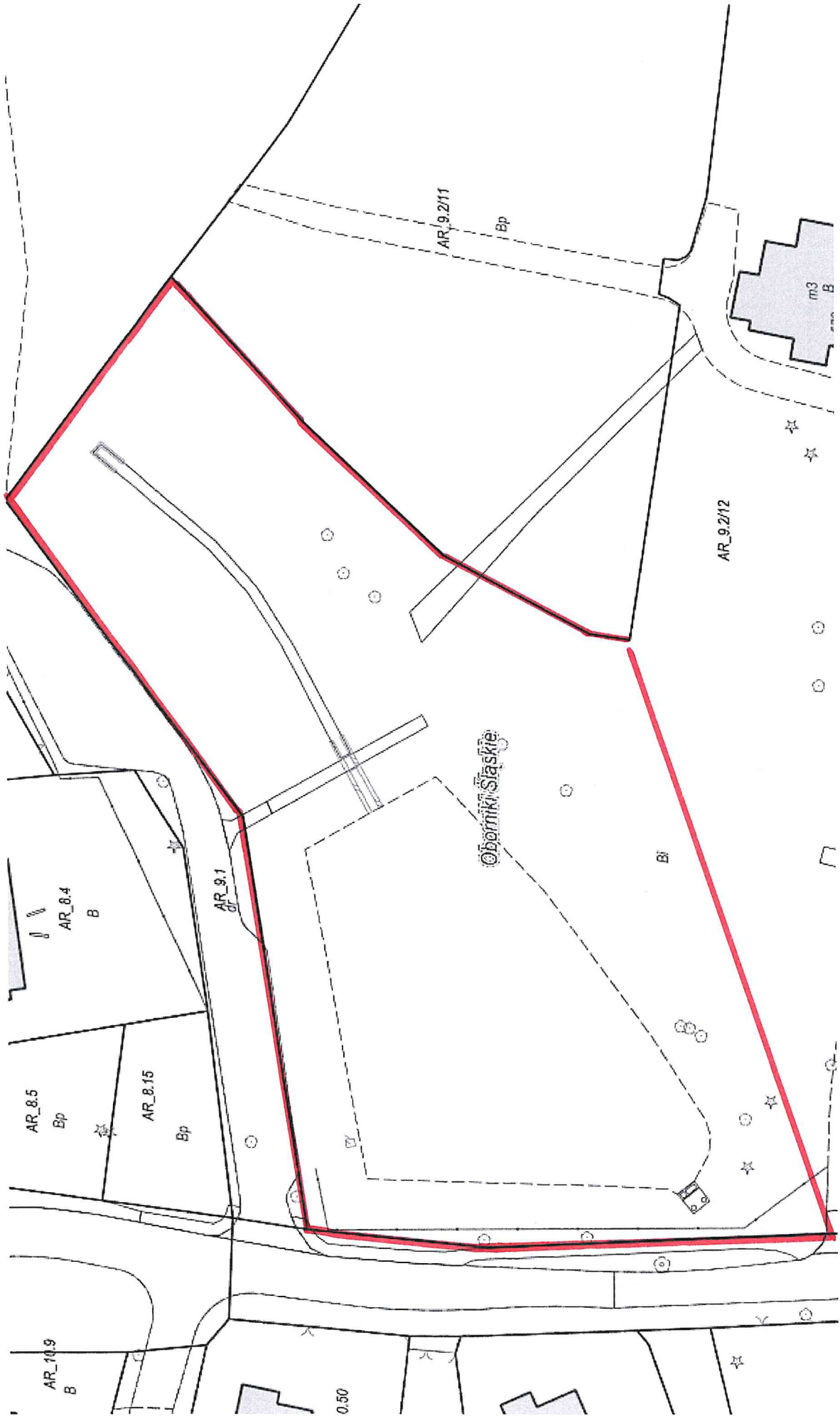


5.7.





5.8.



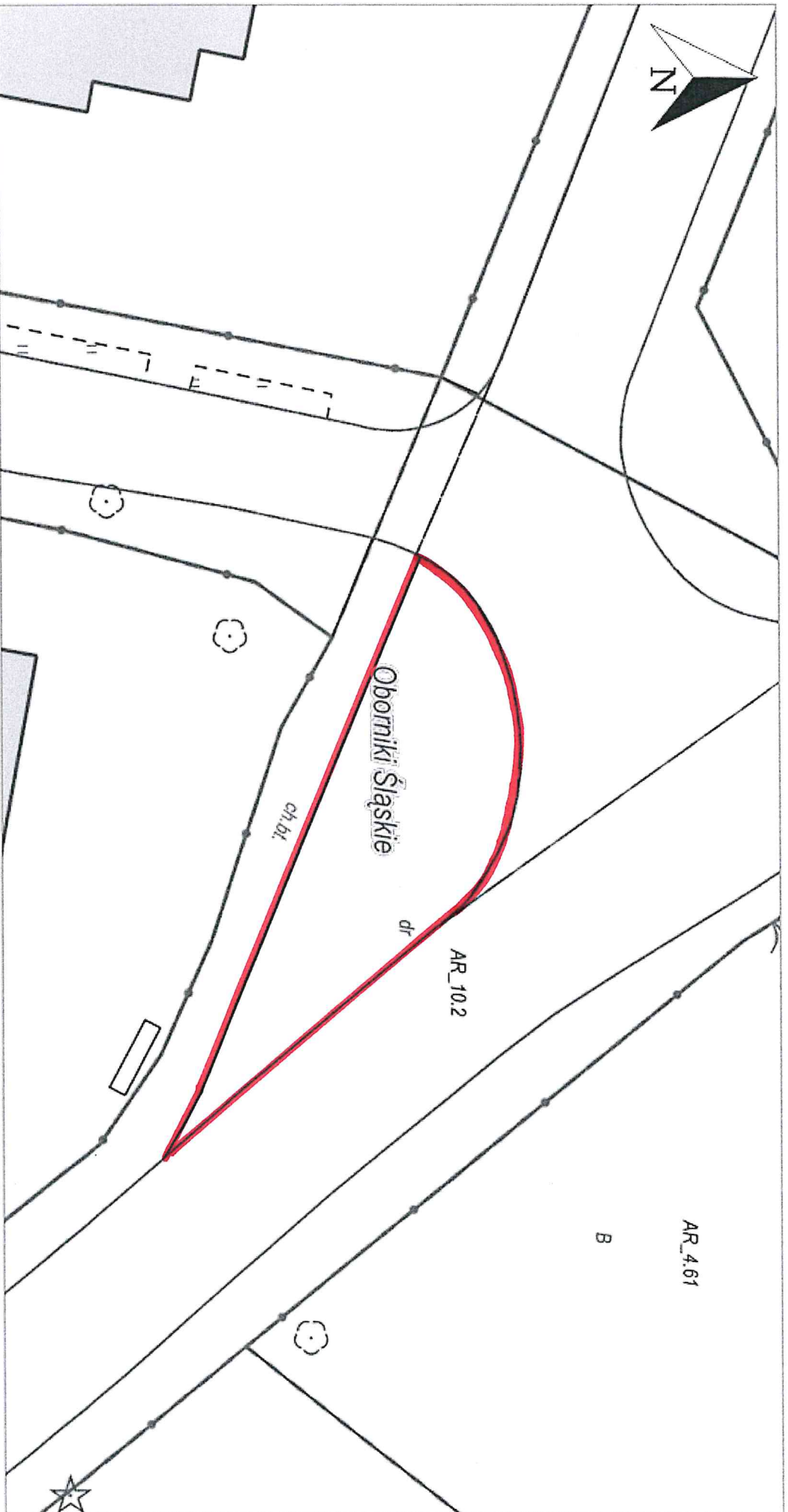


5.9.

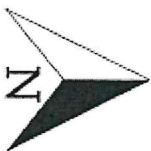




5.10.

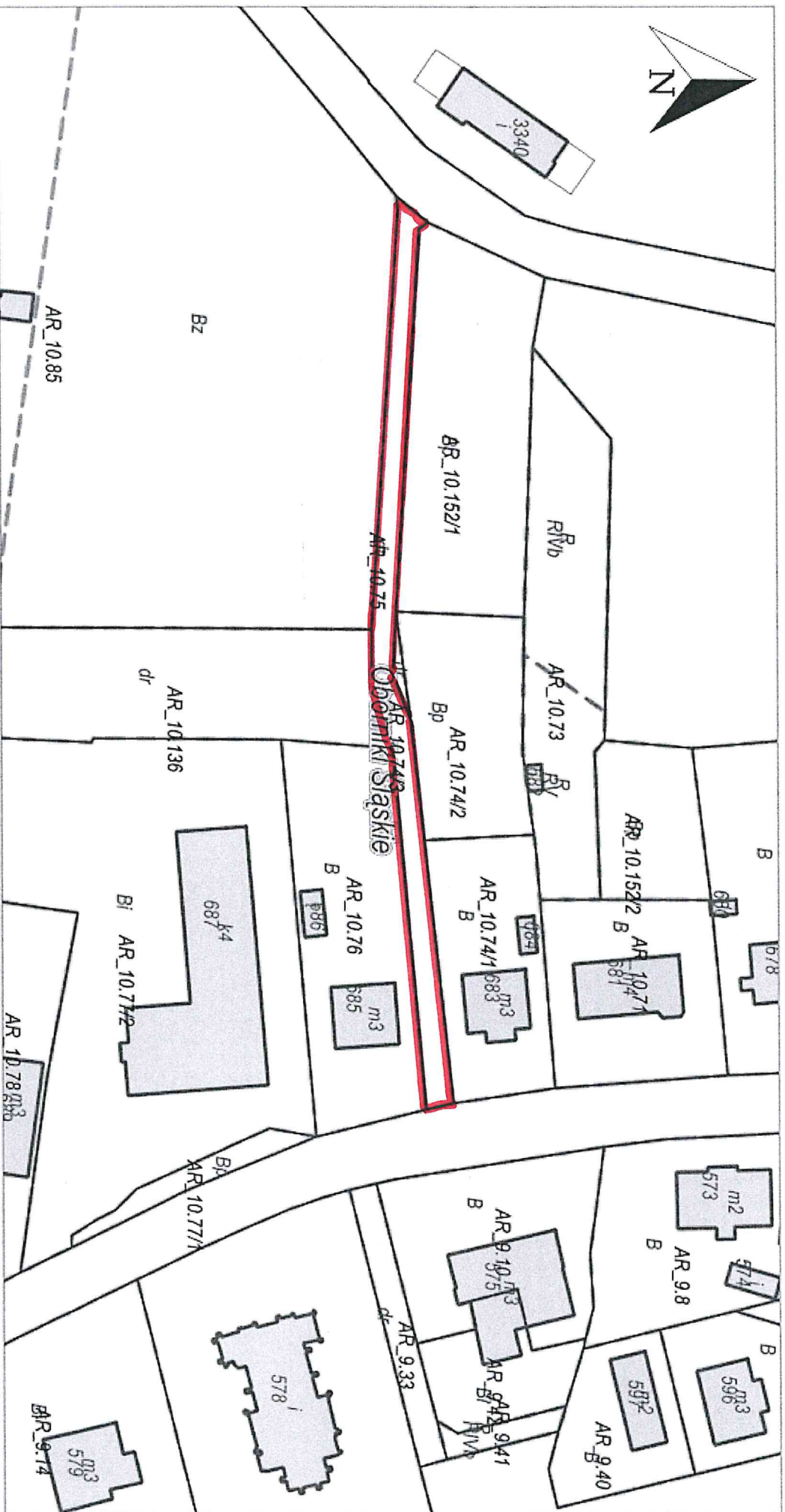






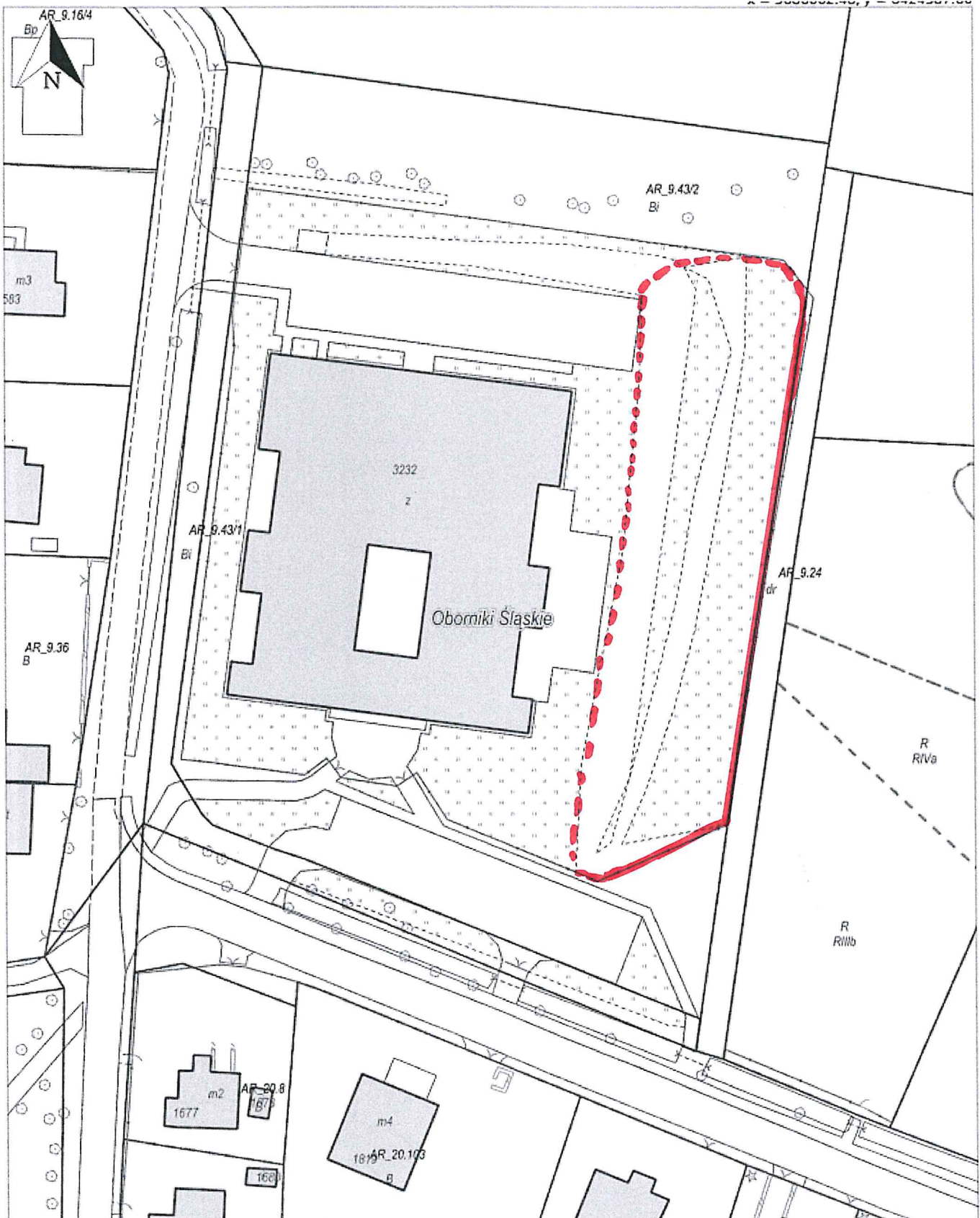


# 5.12.





5.13.



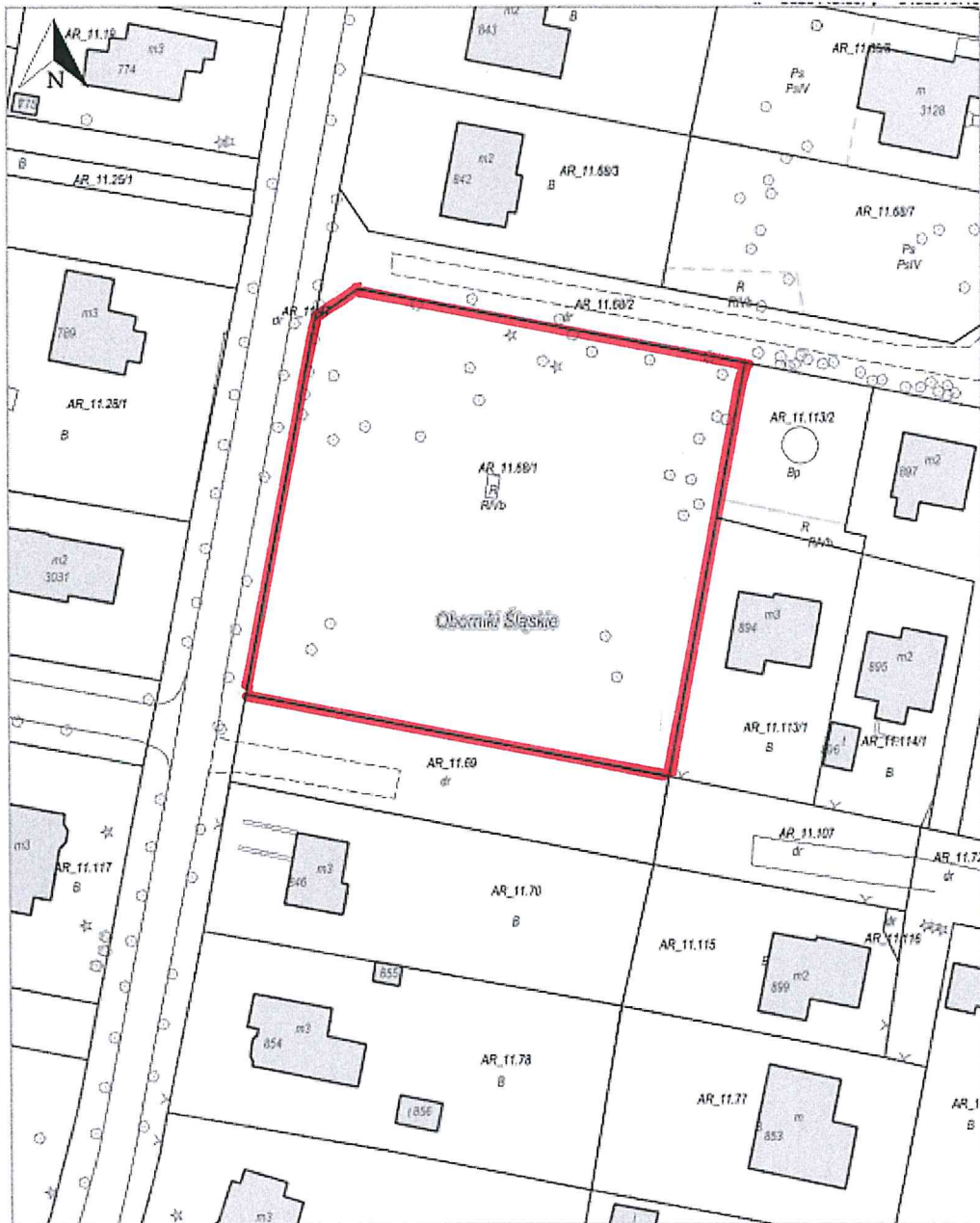


6.1.





## 6.2.



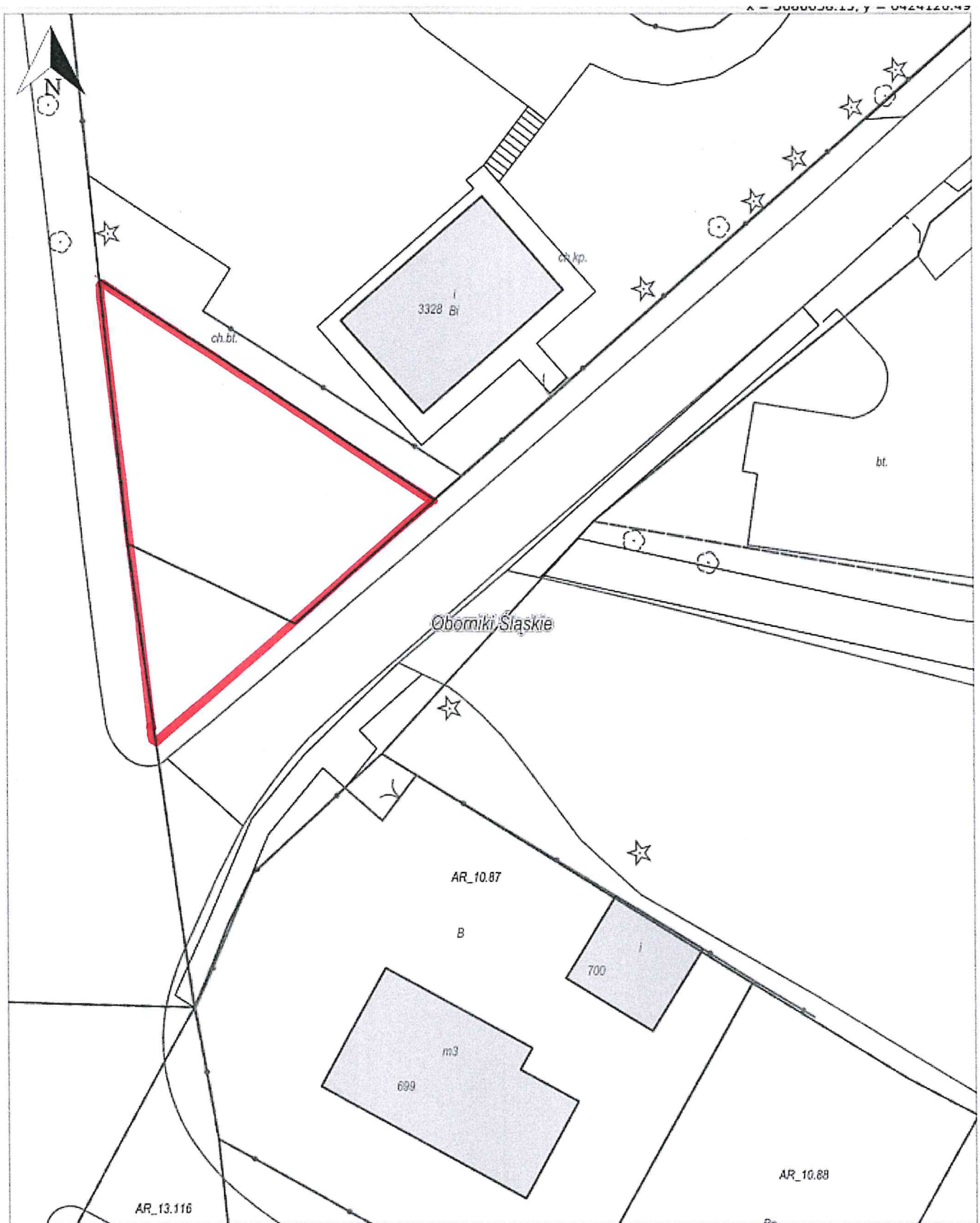


G.B.





6.4.





## 6.5.





6.6.

