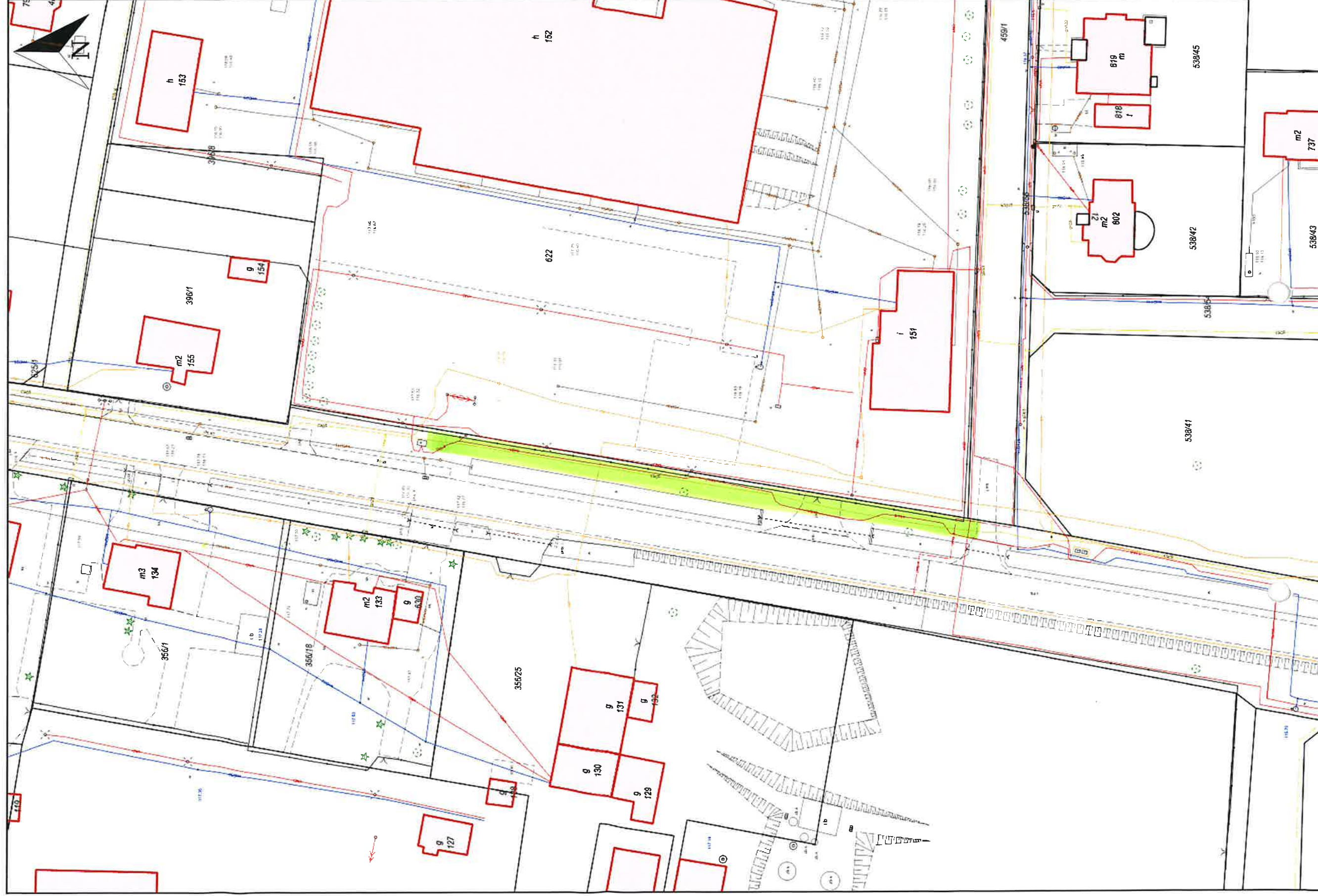


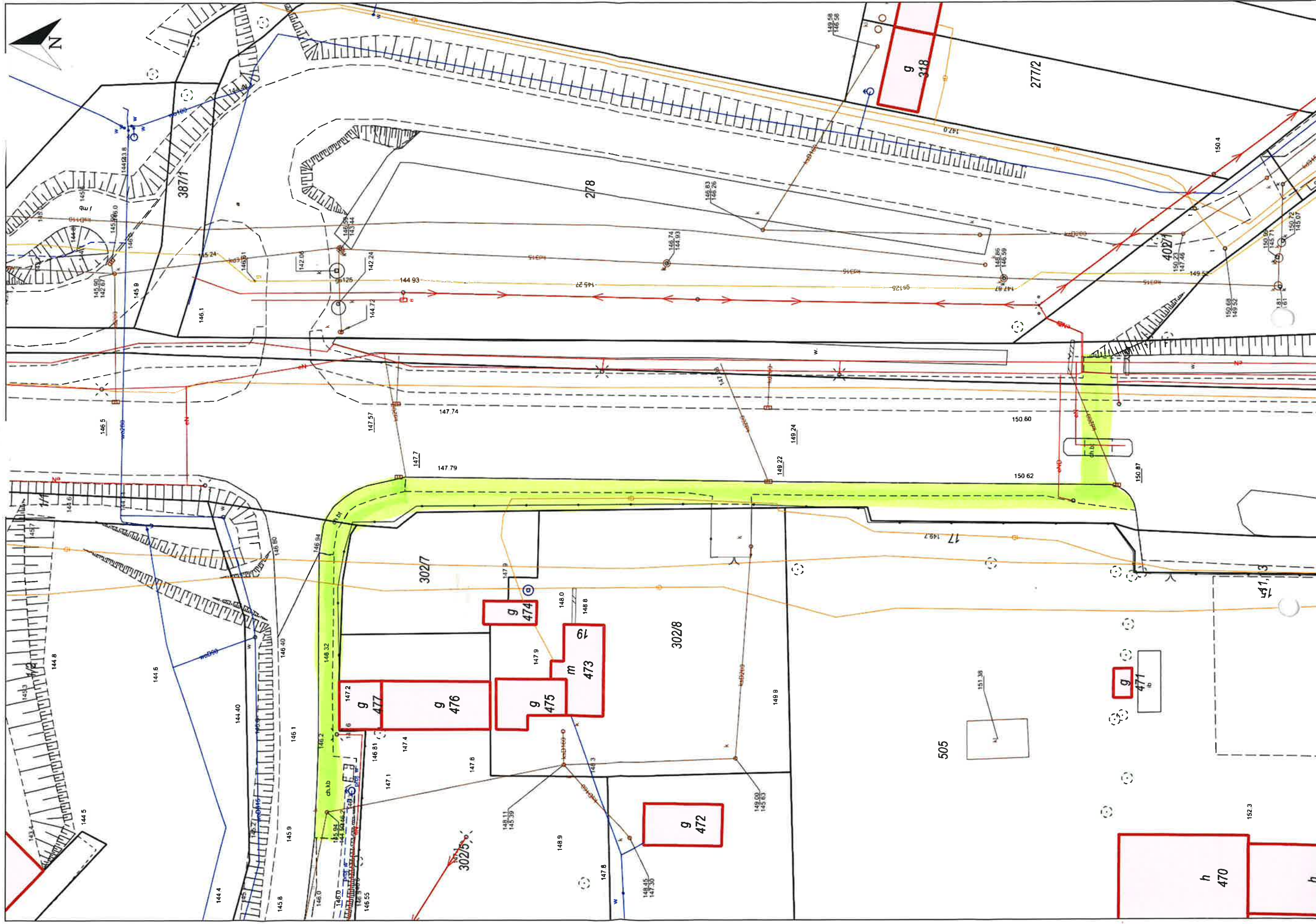
This is a detailed cadastral map of a residential area in Berlin. The map shows property boundaries, building footprints, and various annotations. A prominent green highlighted area runs horizontally across the middle. Numerous buildings are outlined in red and labeled with codes like 'm 478', 'g 474', 'm2 471', etc. The map includes a scale bar at the bottom left and a north arrow at the top left.

chodnik – ul. Wrocławska w Szewcach
Zadanie 1, Część 2



Ścieżka pieszo-rowerowa – ul. Wrocławska w Wiszni Małej

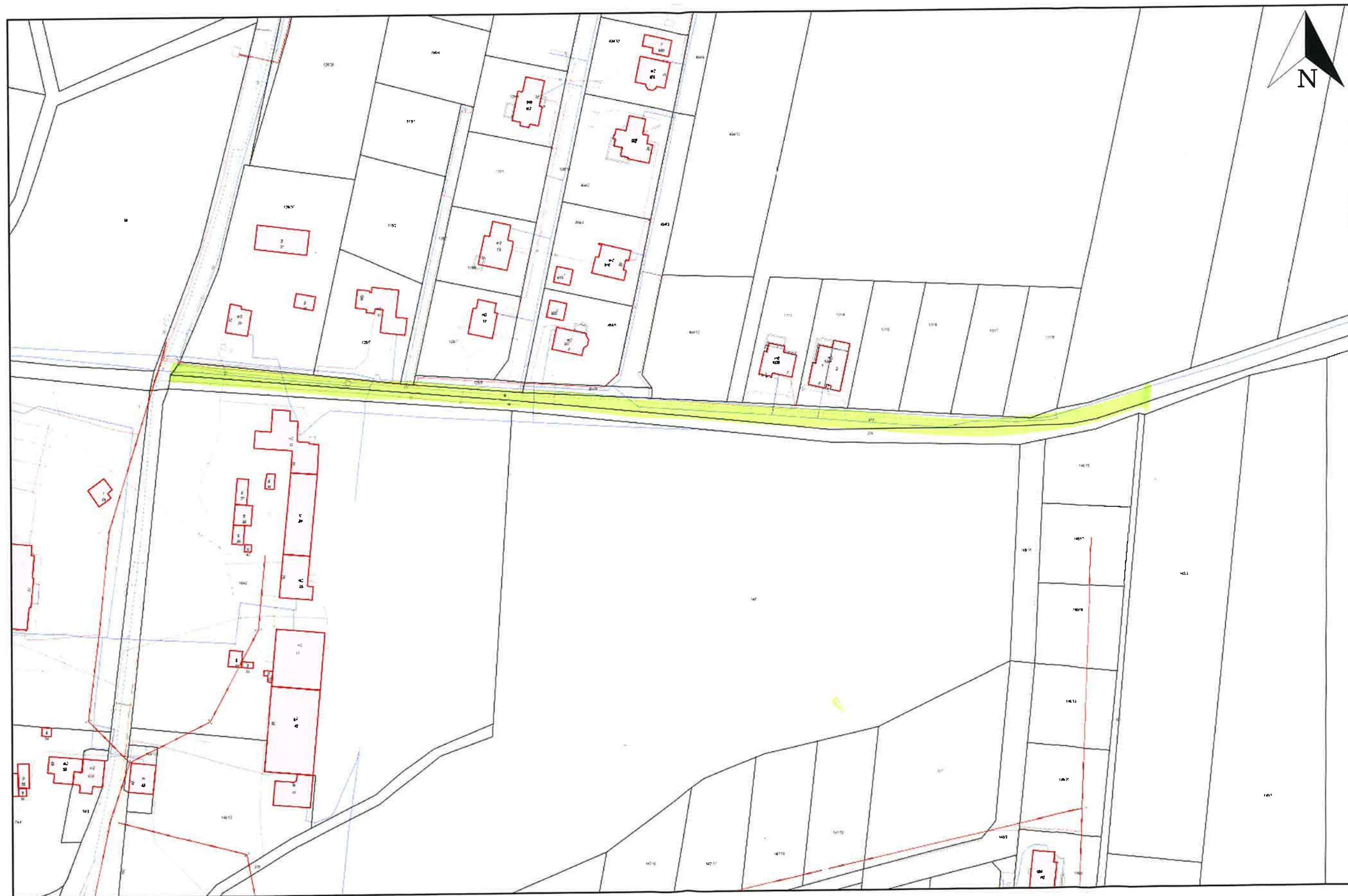
Zadanie 2

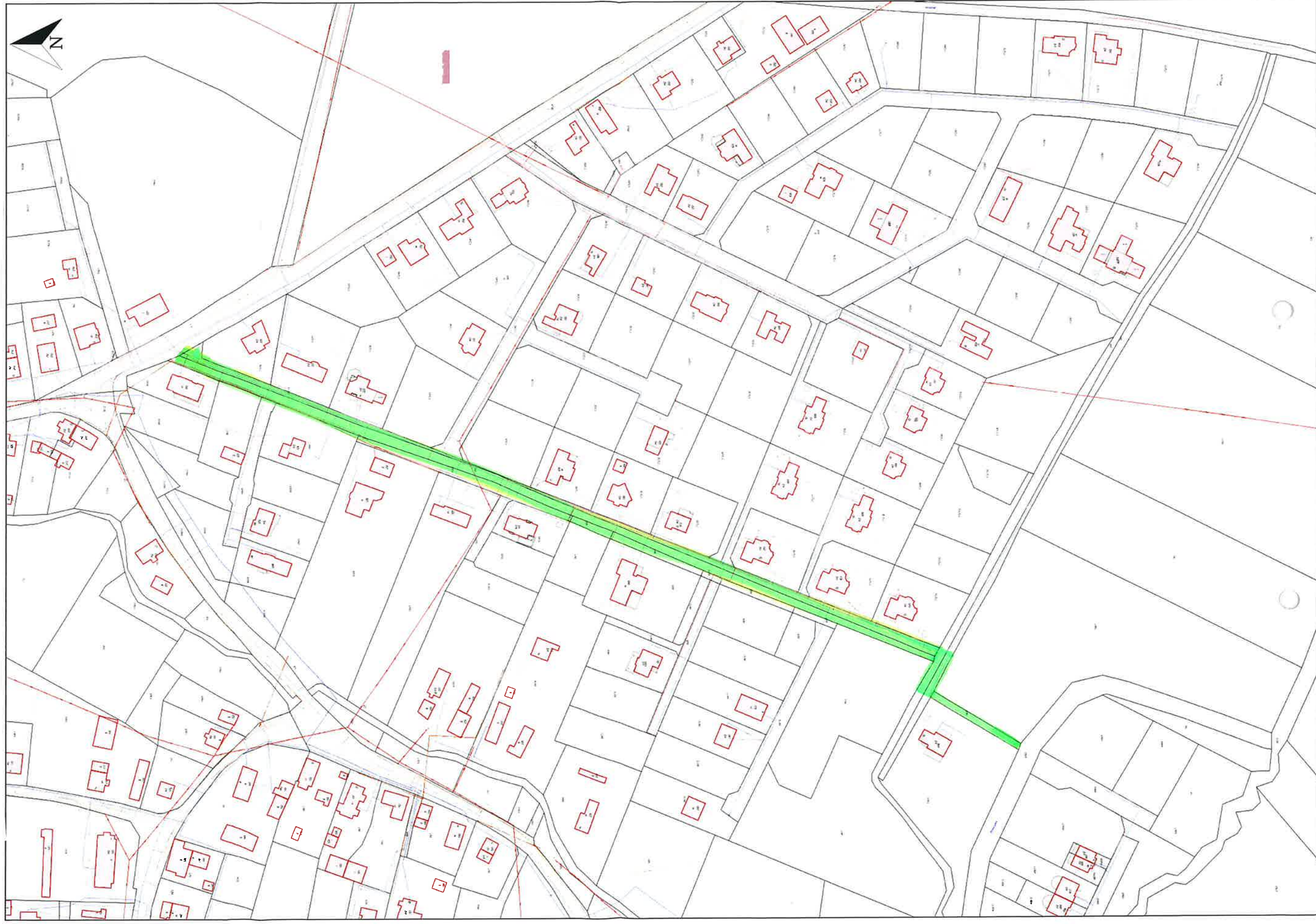


ul. Bzowa w Mienicach Zadanie 4

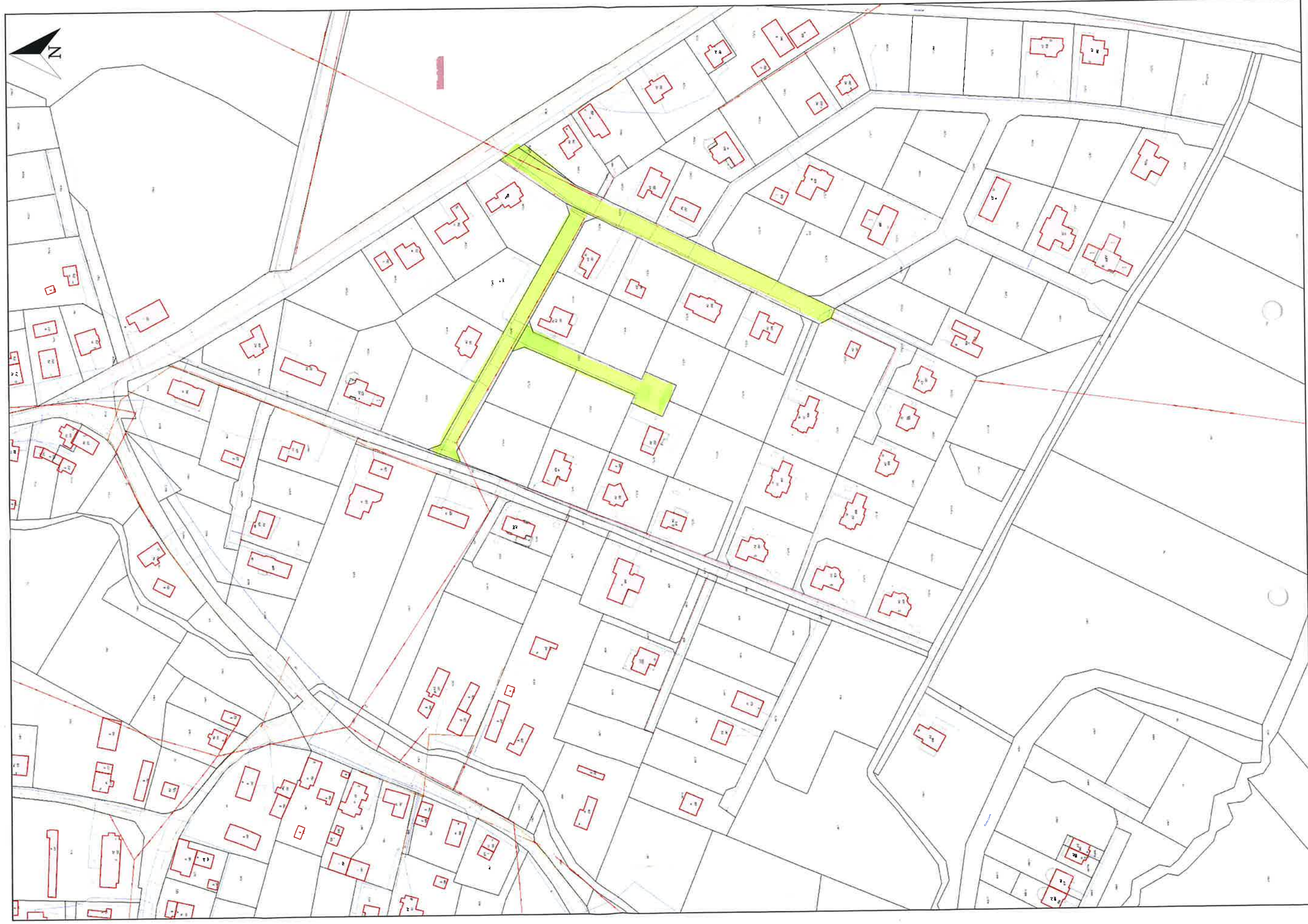


ul. Nad Potokiem w Wiszni Małej Zadanie 5

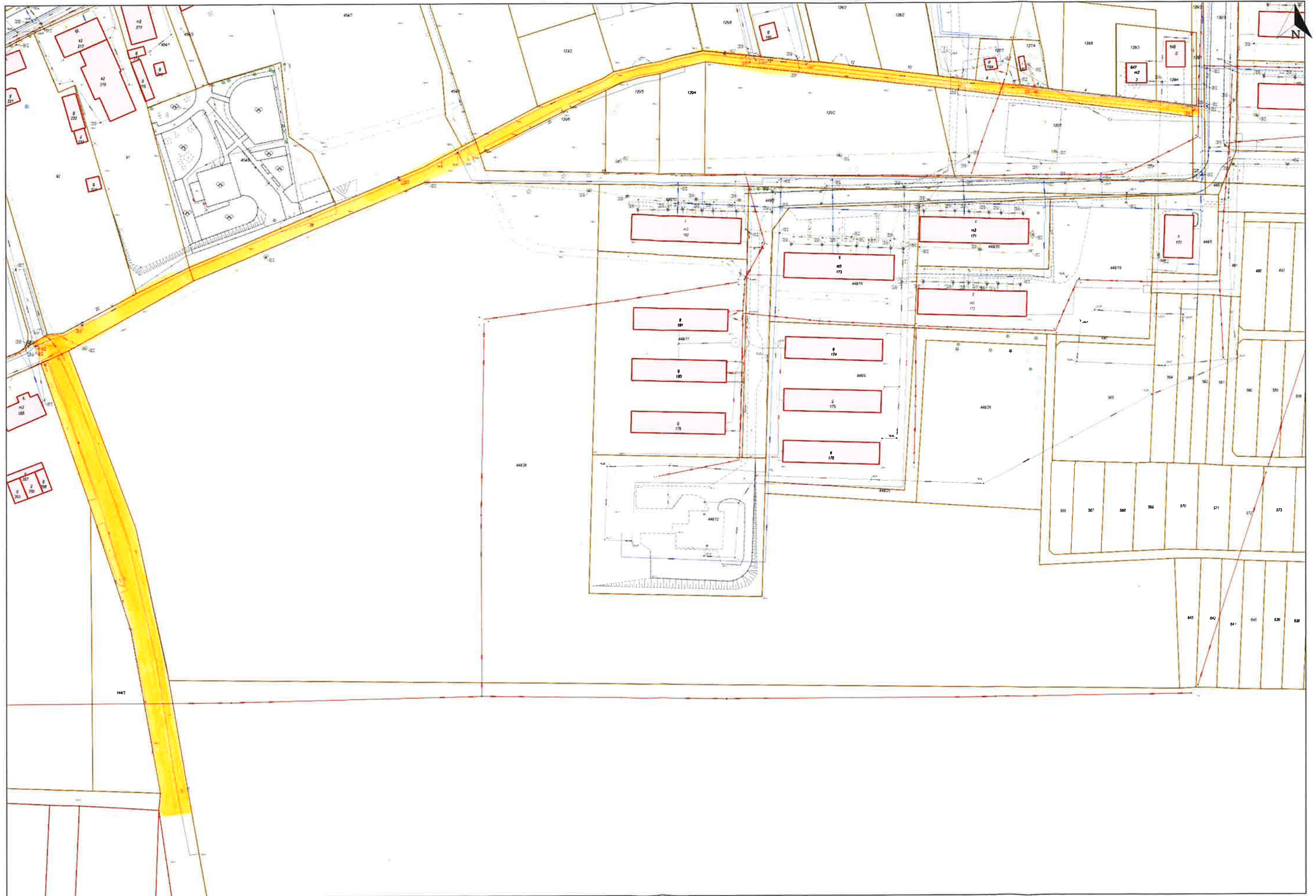




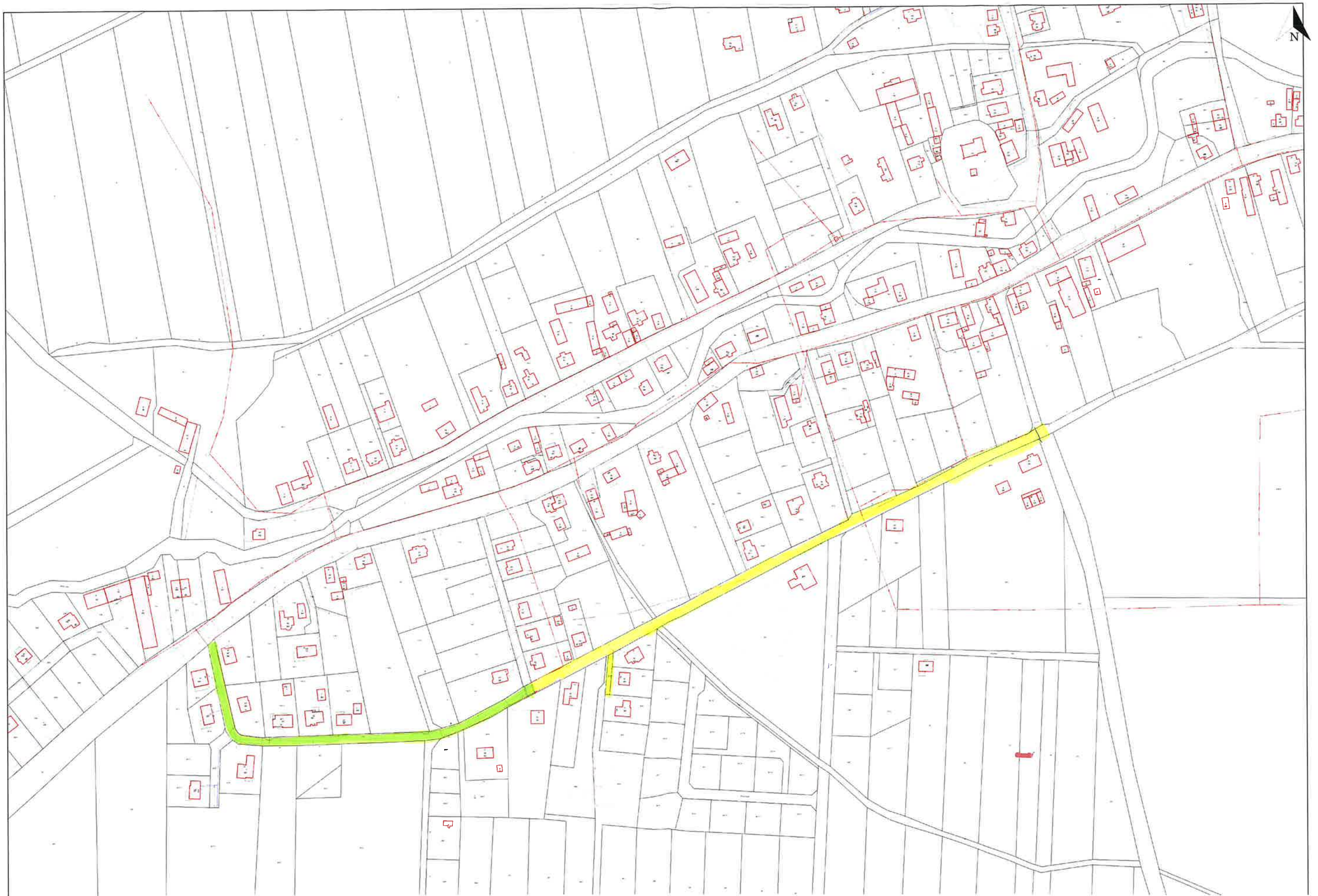
ul. Orlikowa w Wisznia Mała
Zadanie 7

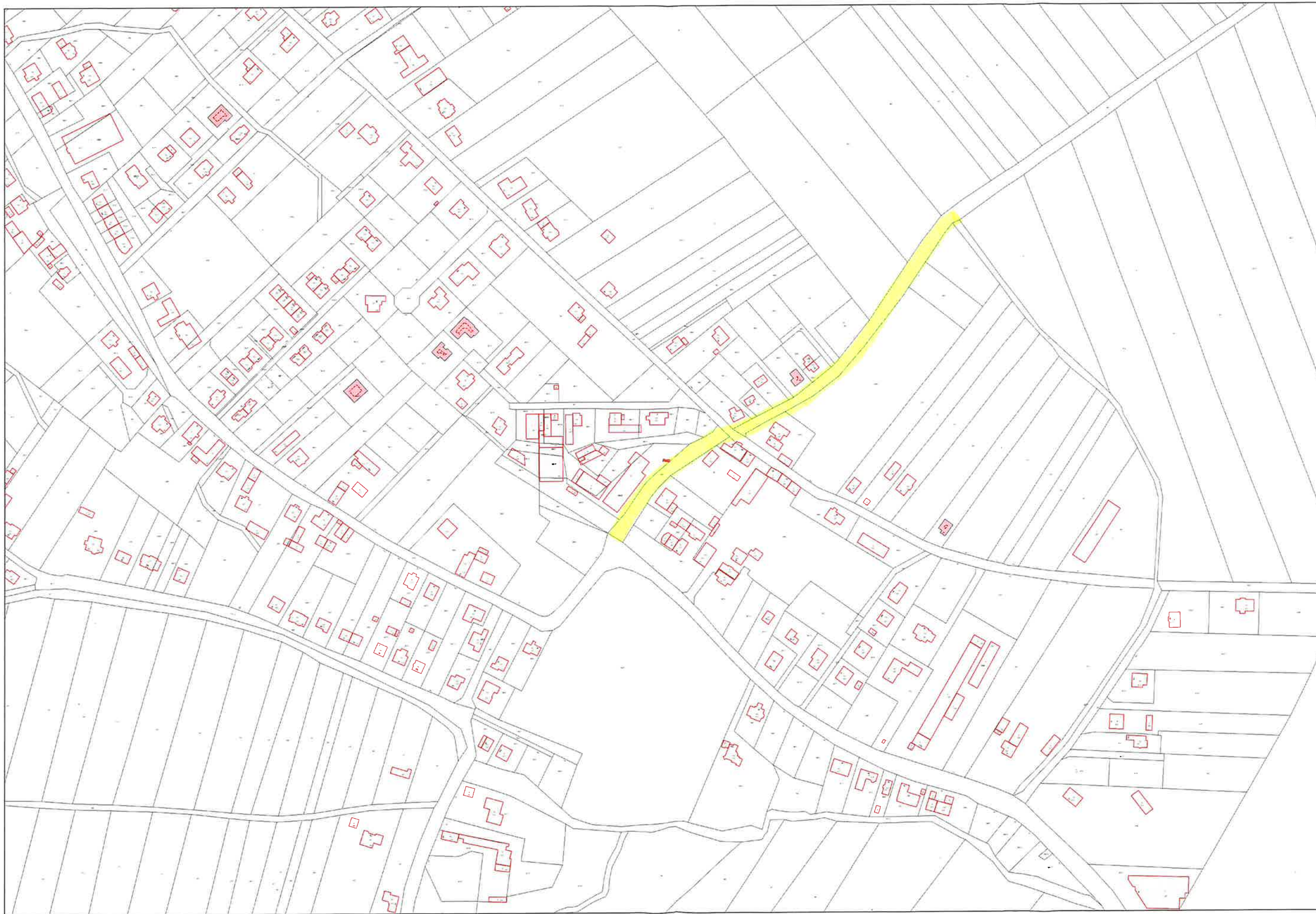


Ul. Osiedlowa w Strzeszowie – Zadanie 8, Etap I



ul. Osiedlowa w Strzeszowie – Zadanie 8, Etap II i III



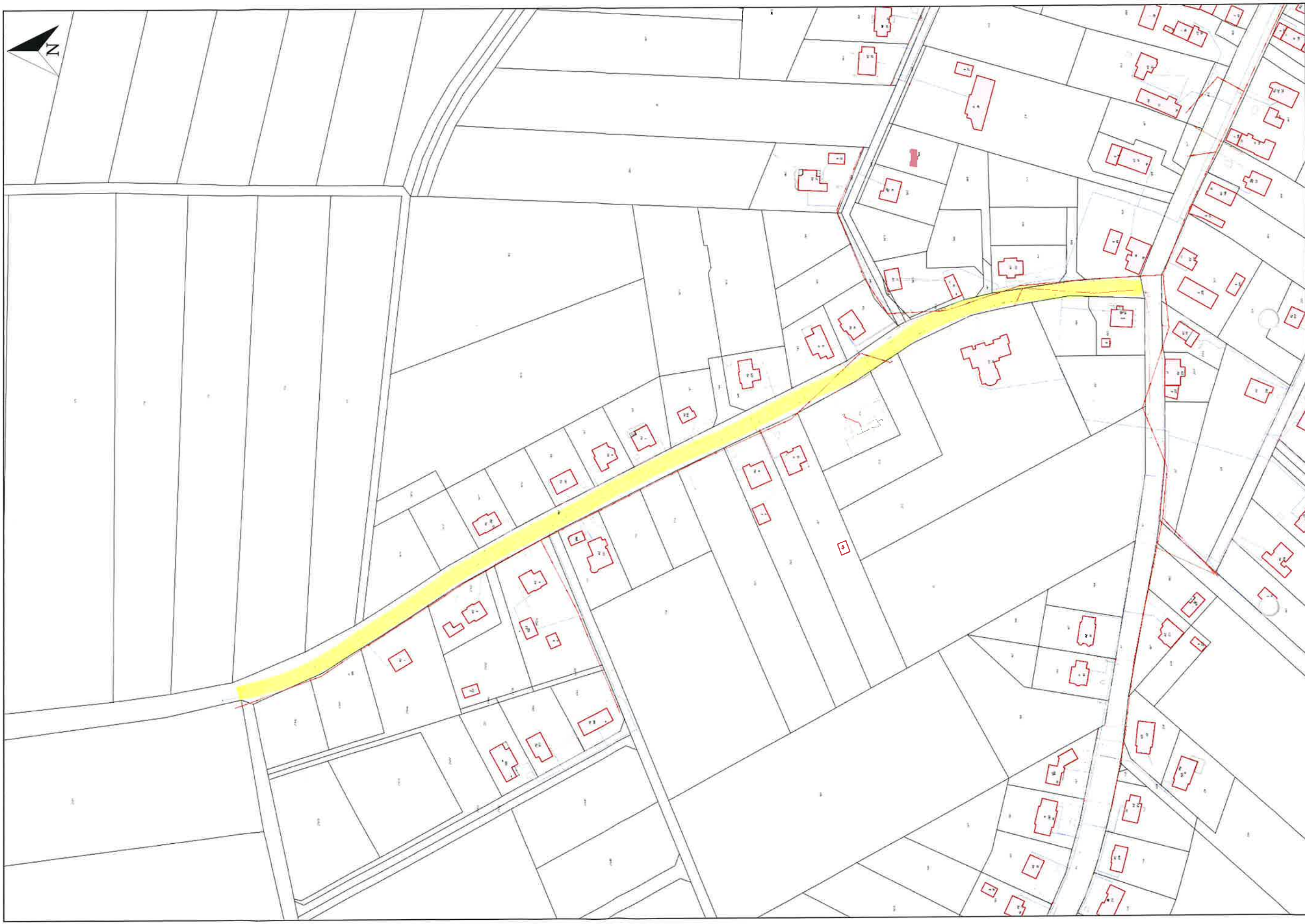


ul. Spokojna w Ozorowicach – Zadanie 10a



ul. Spokojna w Ozorowicach – Zadanie 10b

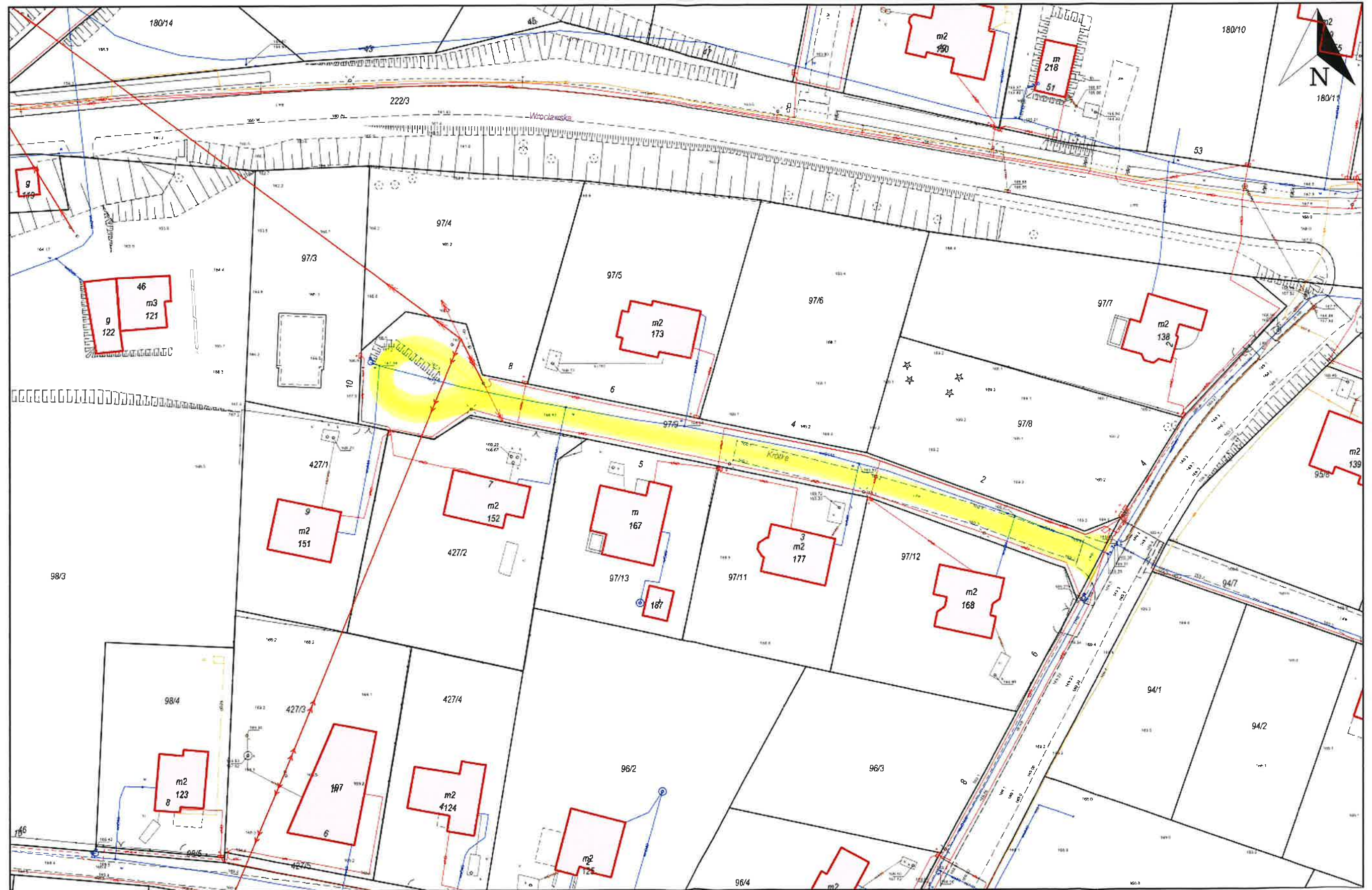




ul. Piękna w Pierwoszowie Zadanie 12



Zadanie 13



ul. Wierzbowa w Malinie Zadanie 14

