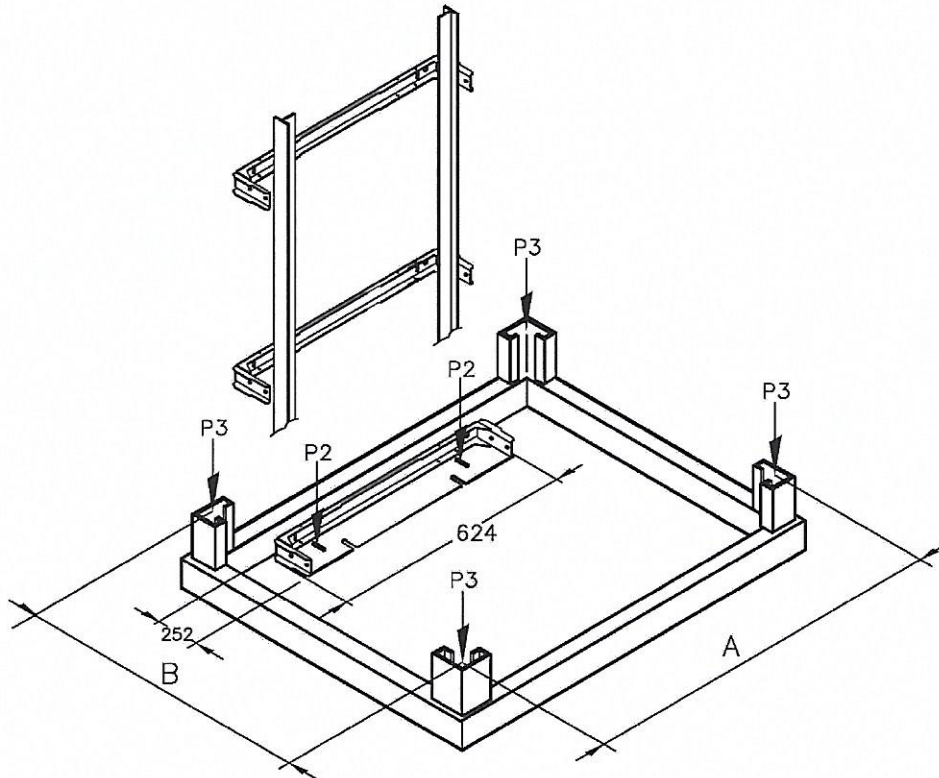


VERTICAL PLATFORM LIFT Mod. E10

CLIENT: WINDPOLDZWIG SP. Z.O.O.

ORDER: EOP098

LOADS ON THE BASE PLATE



PROJECT DATA

Load capacity =	400	kg	A =	1662.5	mm
Platform width =	1460	mm	B =	1551	mm
Platform depth =	1170	mm			
Travel =	4400	mm			

"P2" IS THE MAXIMUM LOAD WITH THE SAFETY GEAR IN ACTION ON THE RAIL
THE LOAD IS DISTRIBUTED ON THE BASE PLATE (624x252)

P2 = 1624 Kg

"P3" SELF SUPPORTING STRUCTURE LOADS WITH GLASS LIFT SHAFTS ON THE FOUR SIDES OF THE
STRUCTURE

P3 = 1321 Kg

Norm: SR – Führungsschiene

DATE 23/11/20

Data _____ Firma _____

vimec