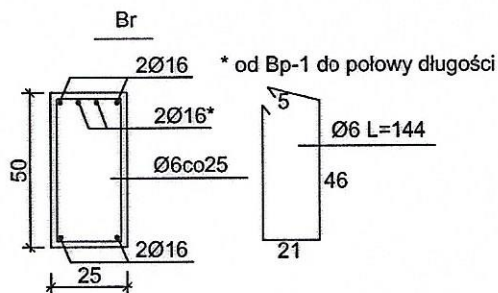
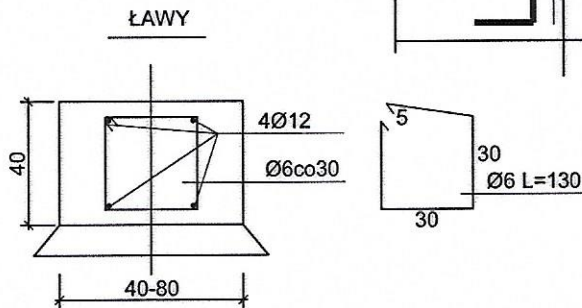
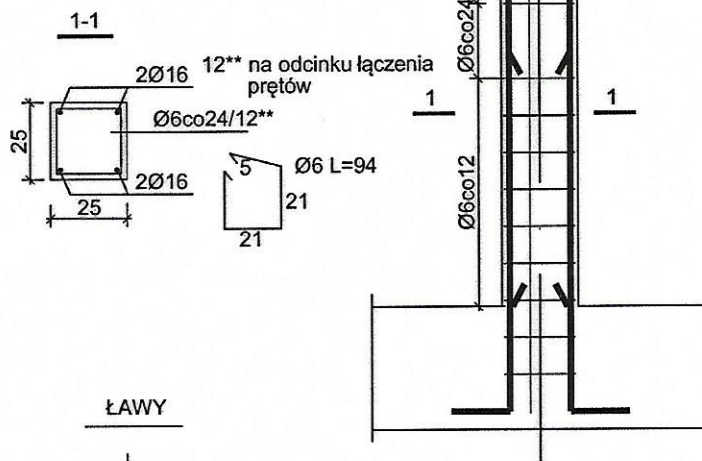
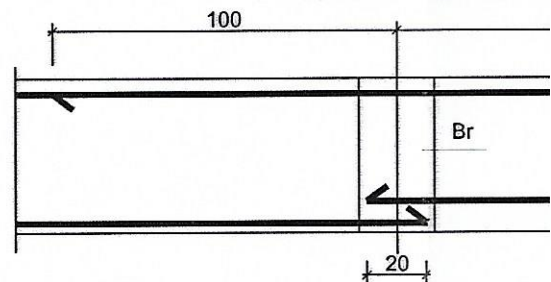
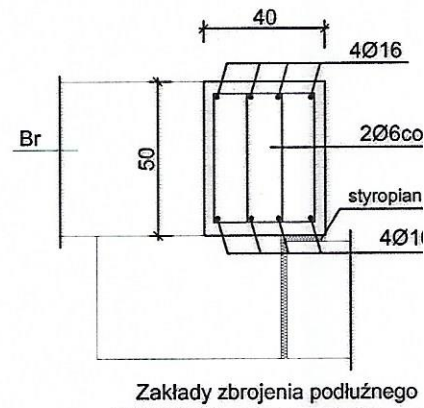


# SŁUPY

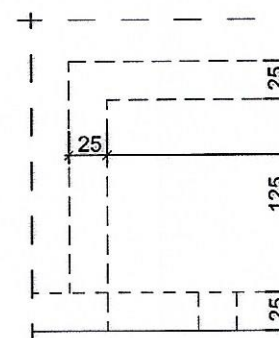
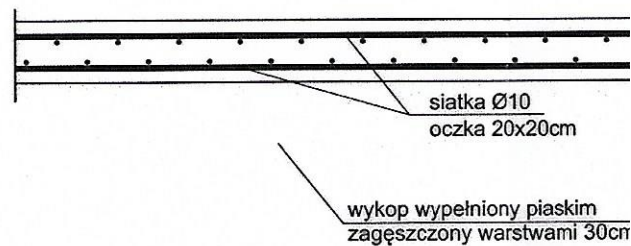


BETON B25/30  
STAL A-III Ø10-16  
STAL A-0 Ø6

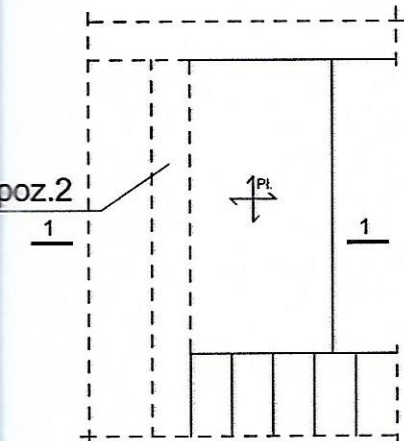
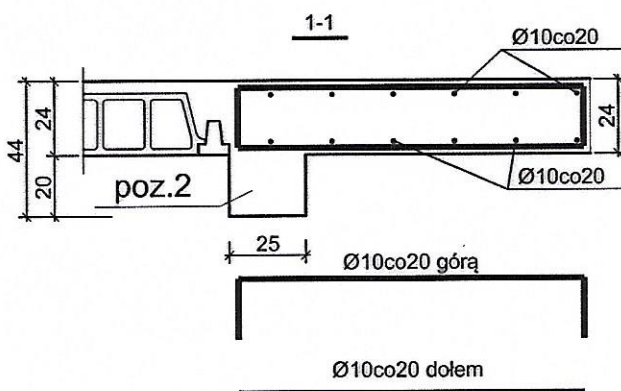
# Bp-1



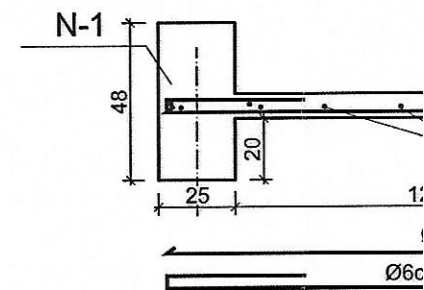
# Płyta pod platformę dla niepełnosprawnych



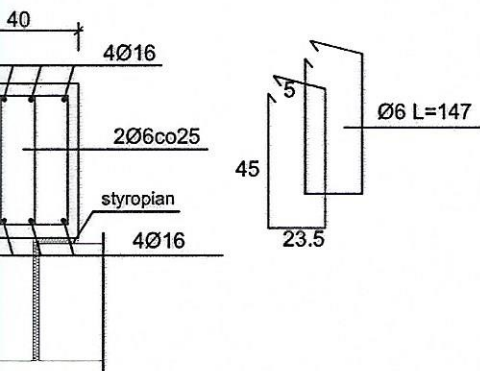
# Pl-1



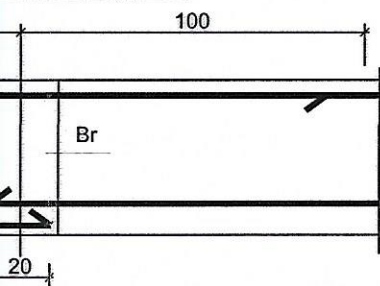
# 2-2



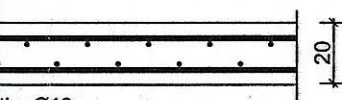
Bp-1



ojenia podłużnego

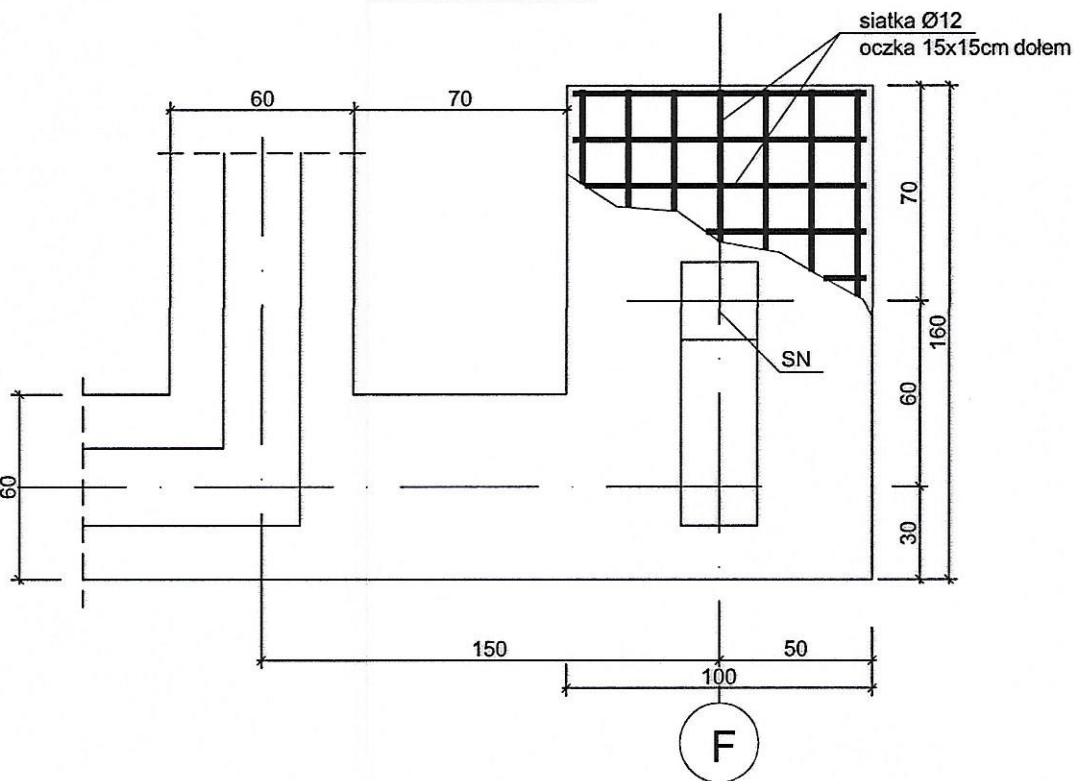


pełnosprawnych

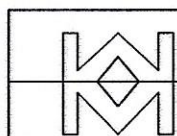
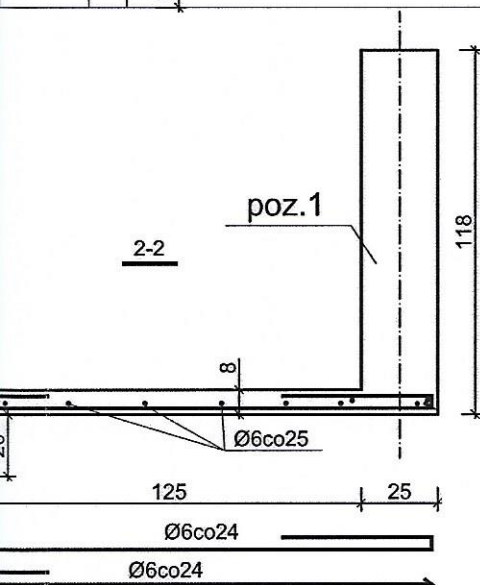
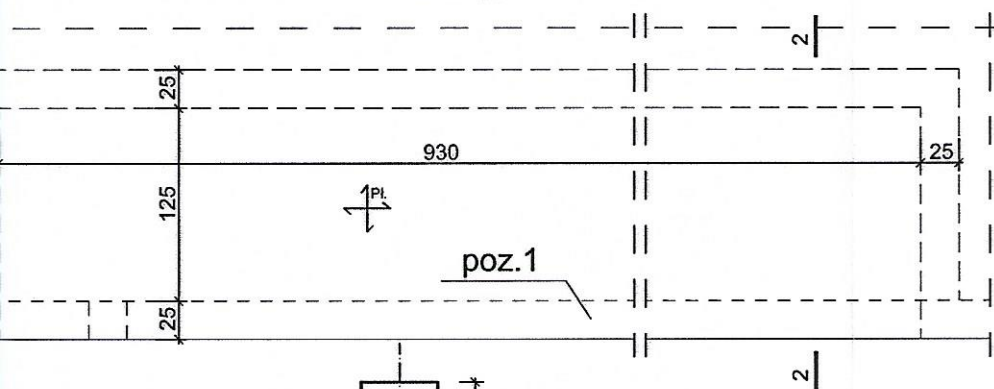
tka Ø10  
zka 20x20cmłniony piaskim  
y warstwami 30cm do Id=07

1

STOPA NAROŻNA



Pl-2



Pracownia Projektowa  
"Mazuś i Mazuś"  
ul. Borelowskiego 9 m 2  
42-214 Częstochowa  
tel. 34-322-39-34

TERMOMODERNIZACJA I ROZBUDOWA BUDYNKU  
U.G IO.S.P.STARCZA  
42-261 STARCZA ul.GMINNA 4  
dz.nr ewid.18/29,18/27,10/3 obręb 0005 Własna

projektował: mgr inż. Wojciech Mazuś  
sprawdził: mgr inż. Elżbieta Ochocka

Upr w spec proj konstr UAN-VIII-7342/95/92  
Upr w spec proj konstr UAN-VIII-83861/138/87

SZCZEGÓŁY FUNDAMENTÓW I PŁYT ŻELB

grudzień 2020

1:25

Nr.rys  
K-1